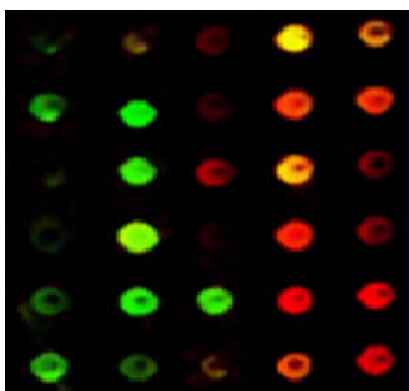
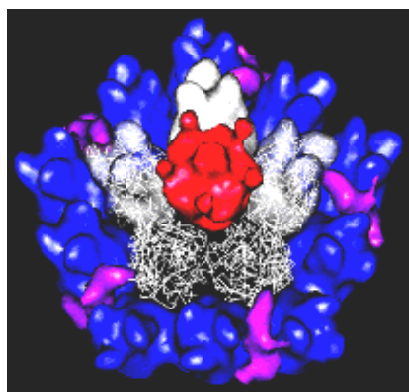
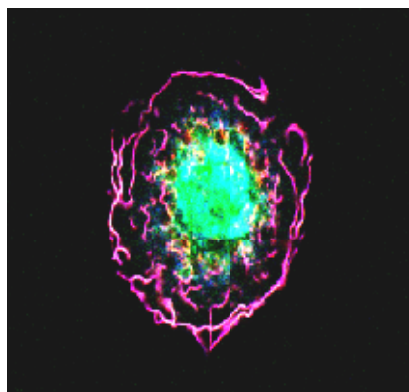


CENTRO DE INVESTIGACION DEL CANCER
CSIC-University of Salamanca, Spain

POSTDOCTORAL POSITIONS



A **POSTDOCTORAL POSITION** is available at the laboratory of **Dr. JOSÉ R. BUSTELO** to studying cytoskeletal regulators involved in cancer and other pathologies such as hypertension, cardiovascular disease and immunodeficiencies. Work in the lab includes the functional characterization of **Vav family oncoproteins, Rho/Rac and Ras GTPases**, and both positive (**GEF**) and negative (**GAPs**) regulators of Ras superfamily GTPases. We also have interest on **signal transduction pathways** mediated by tyrosine kinases that have an impact in the cell cytoskeleton, motility, proliferation, and metastasis.

We are looking for postdoctoral fellows with demonstrated experience in some of the following techniques: **(i)** Generation and work with knockout animals. **(ii)** Signal Transduction and Cell Biology. **(iii)** Cancer. **(iv)** Cardiovascular biology. **(v)** T-cell signaling and immunology.

Recent publications of our lab include Caloca *et al.* (2003) *EMBO J.* **22**: 3326; Llorca *et al.* (2005) *EMBO J.* **24**: 1330; Sauzeau *et al.* (2006) *Nature Medicine* **12**: 841; Sauzeau *et al.* (2007) *Mol. Biol. Cell.* **18**: 943; Ruiz *et al.* (2007) *Mol. Cell. Biol.* **27**: 8127; Mithivanan *et al.* (2008) *Nature Biotechnol.* **26**: 164. Delgado *et al.* (2009) *Nat. Immunol.* **10**: 880; Sauzeau *et al.* (2010) *J. Clin. Inv.* **120**: 315.

Further information about our lab and publications can be found at www.cicancer.org. Information about the city of Salamanca can be found at: www.aboutsalamanca.com.

The position is available between **September-December 2010**, although incorporation dates are negotiable.

Interested individuals should submit their **CVs** and at least **two letters of reference** to the e-mail address indicated below. Only candidates in the top list will receive further feed backs about the recruiting process.

Dr. Xosé R. Bustelo
Centro de Investigación del Cáncer
Campus Unamuno
37007 Salamanca, Spain, EU
E-mail: xbustelo@usal.es