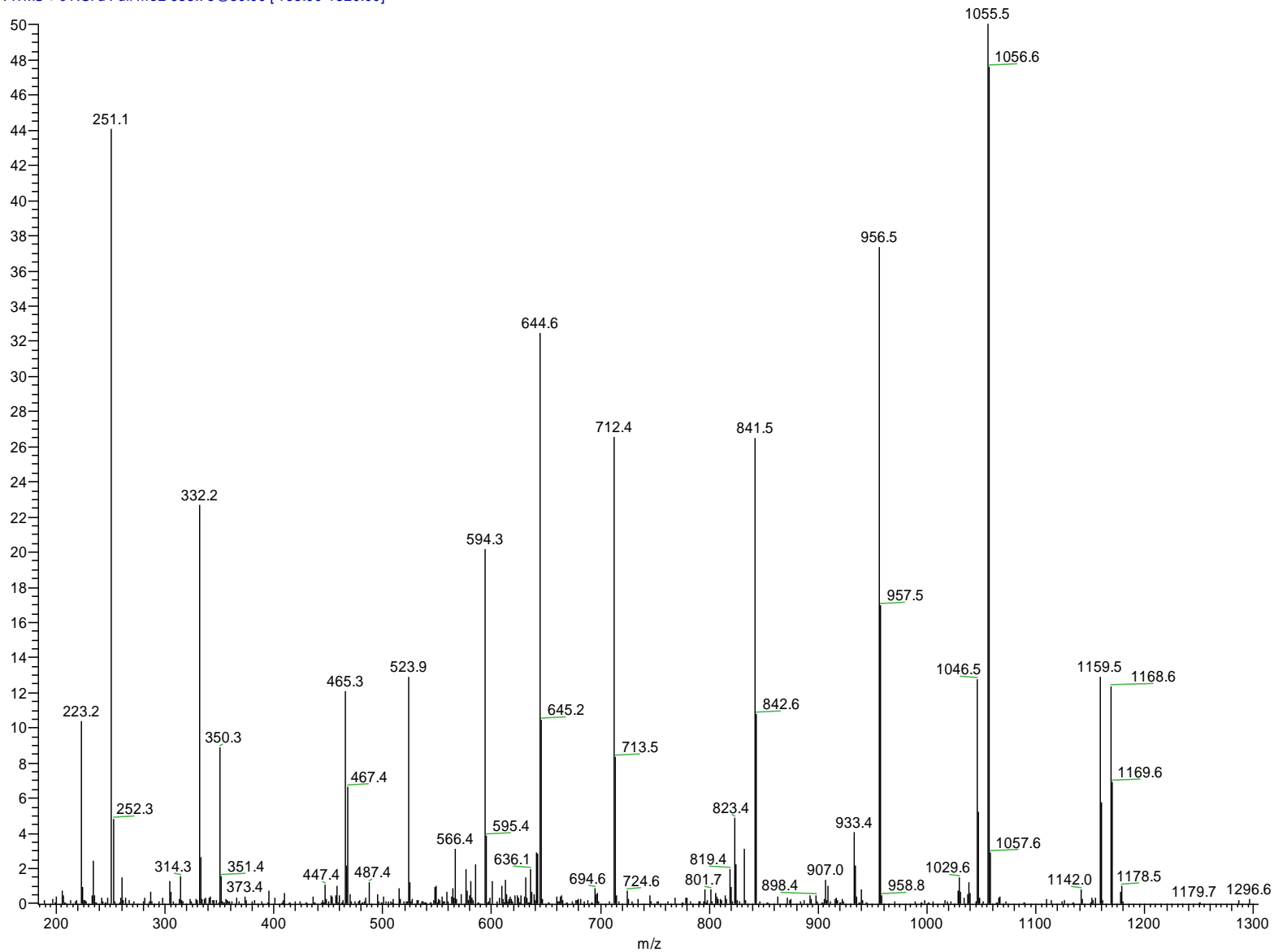


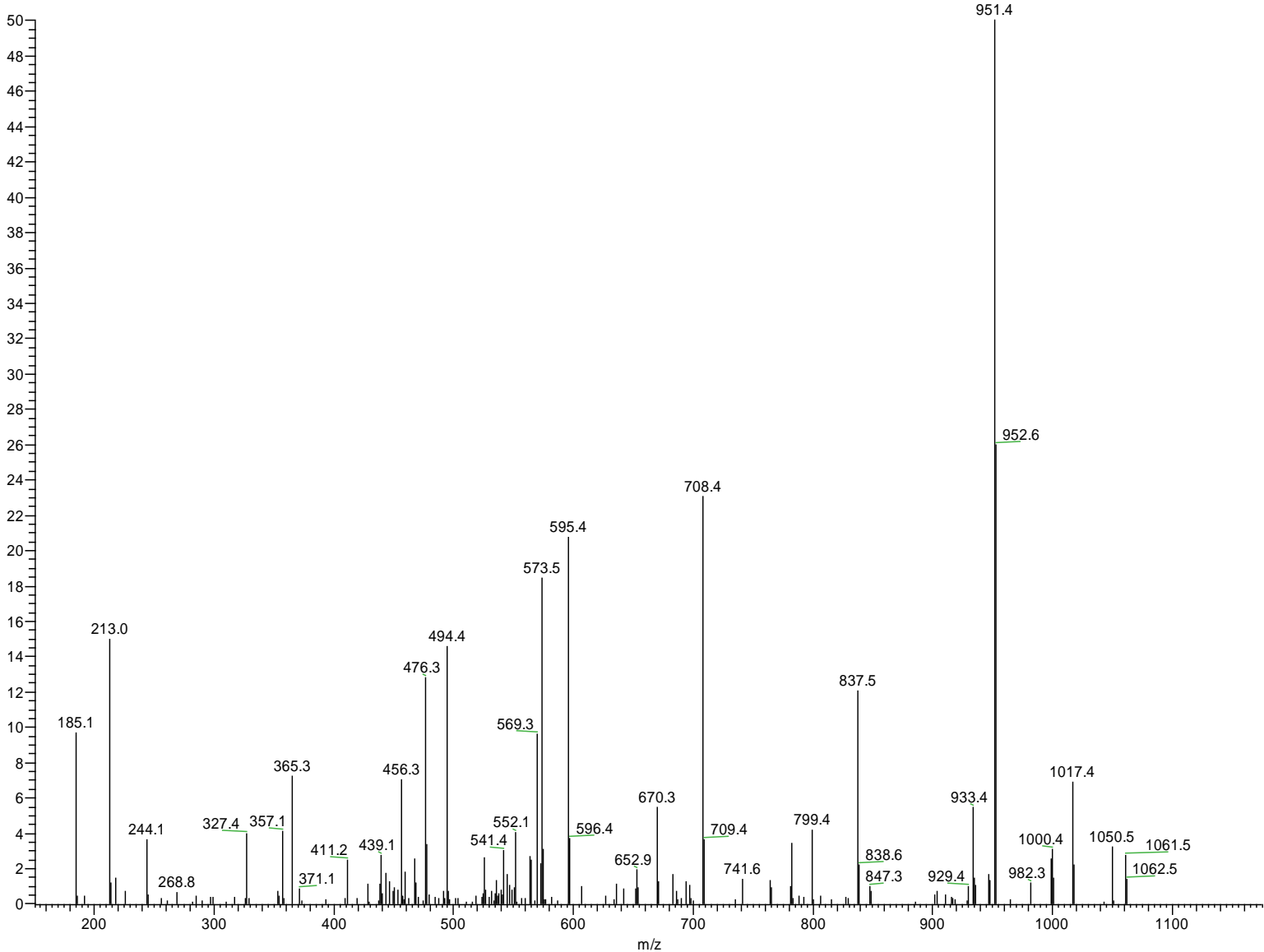
# scan 1

BSA\_031203\_NEWDIGEST02 #4327-4332 RT: 18.43-18.44 AV: 2 NL: 3.49E3  
T: ITMS + c NSI d Full ms2 653.73@30.00 [ 165.00-1320.00]

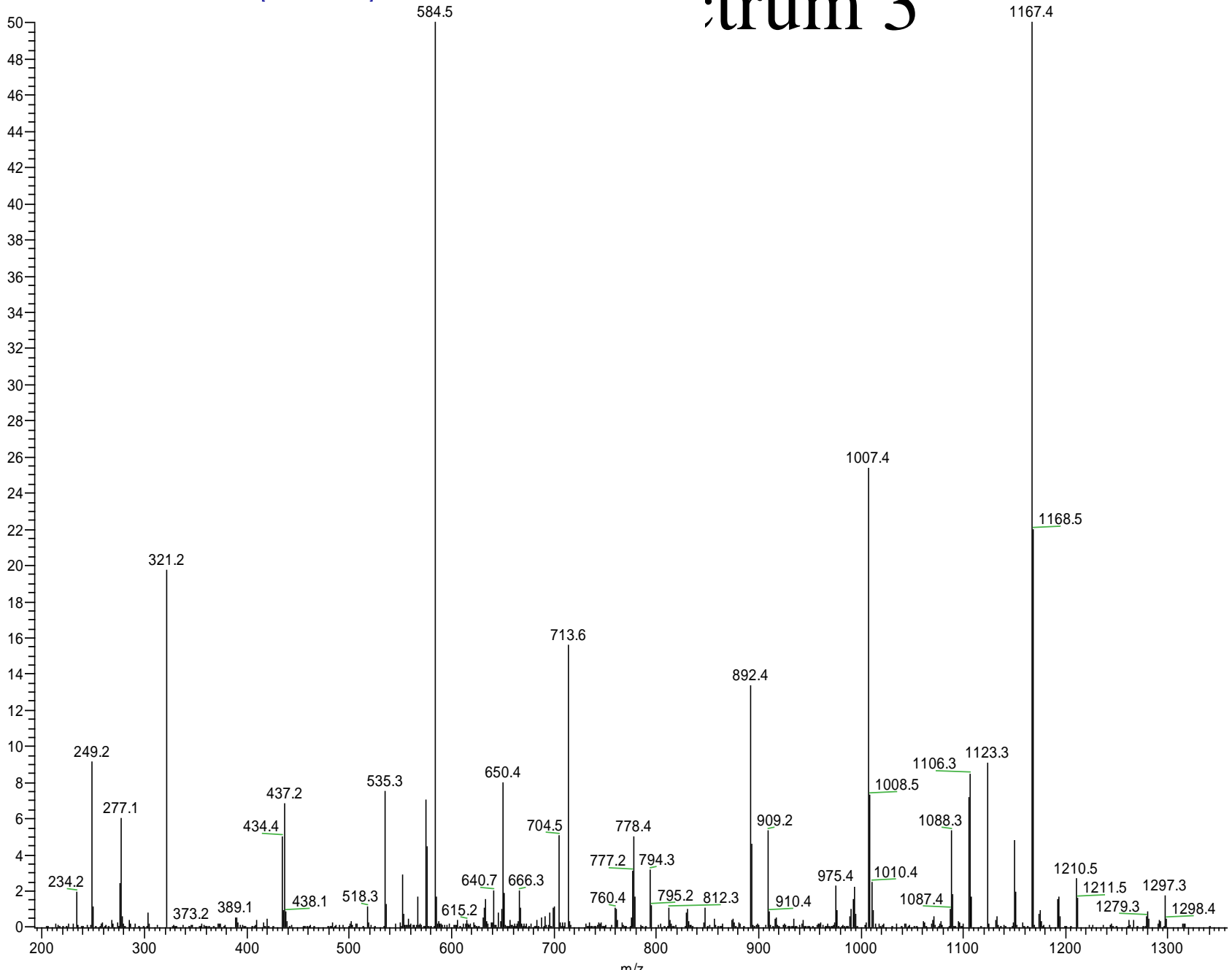


# scan 2

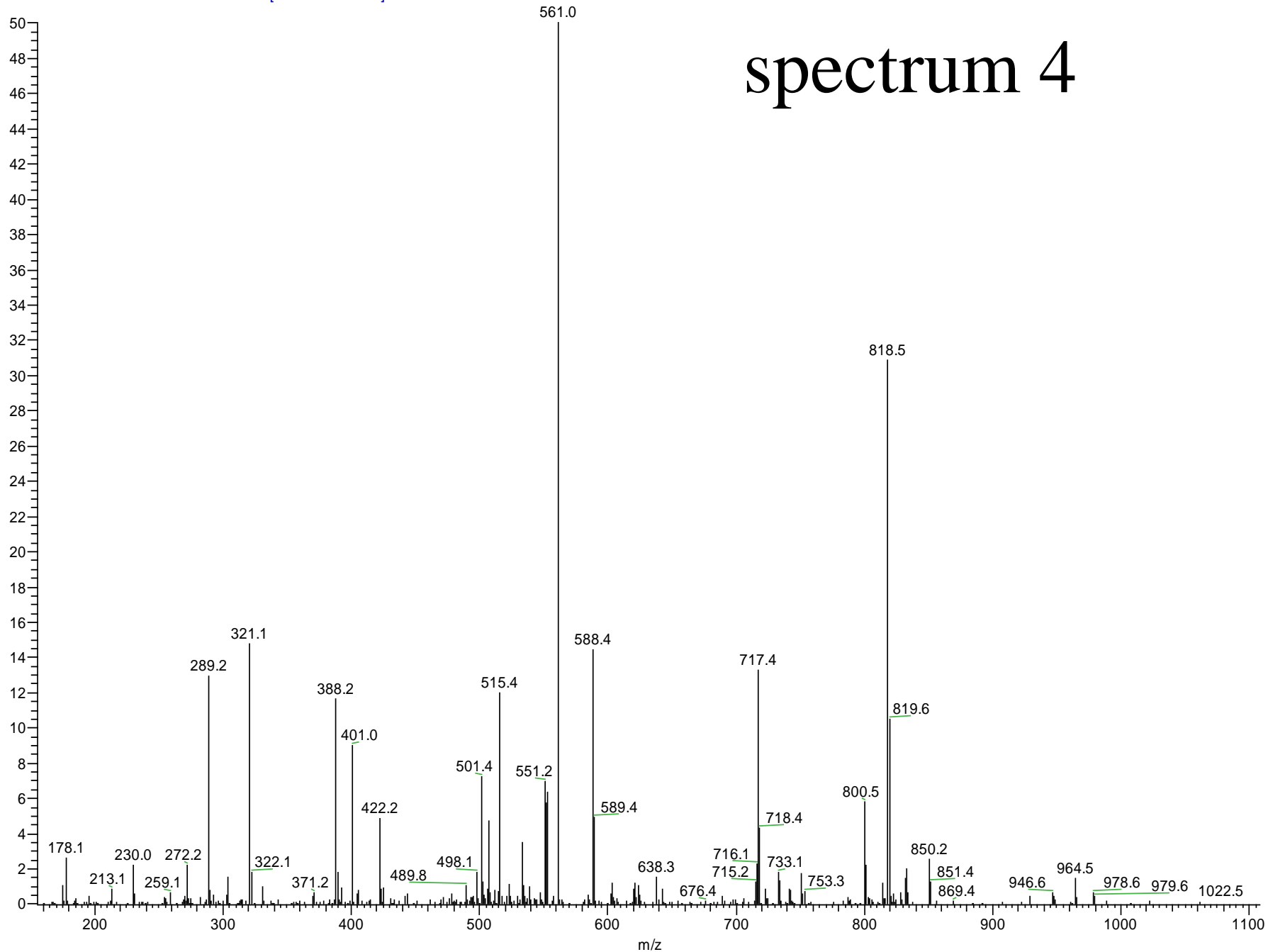
BSA\_031203\_NEWDIGEST02 #5246-5250 RT: 22.49-22.50 AV: 2 NL: 1.15E3  
T: ITMS + c NSI d Full ms2 582.39@30.00 [ 150.00-1175.00]



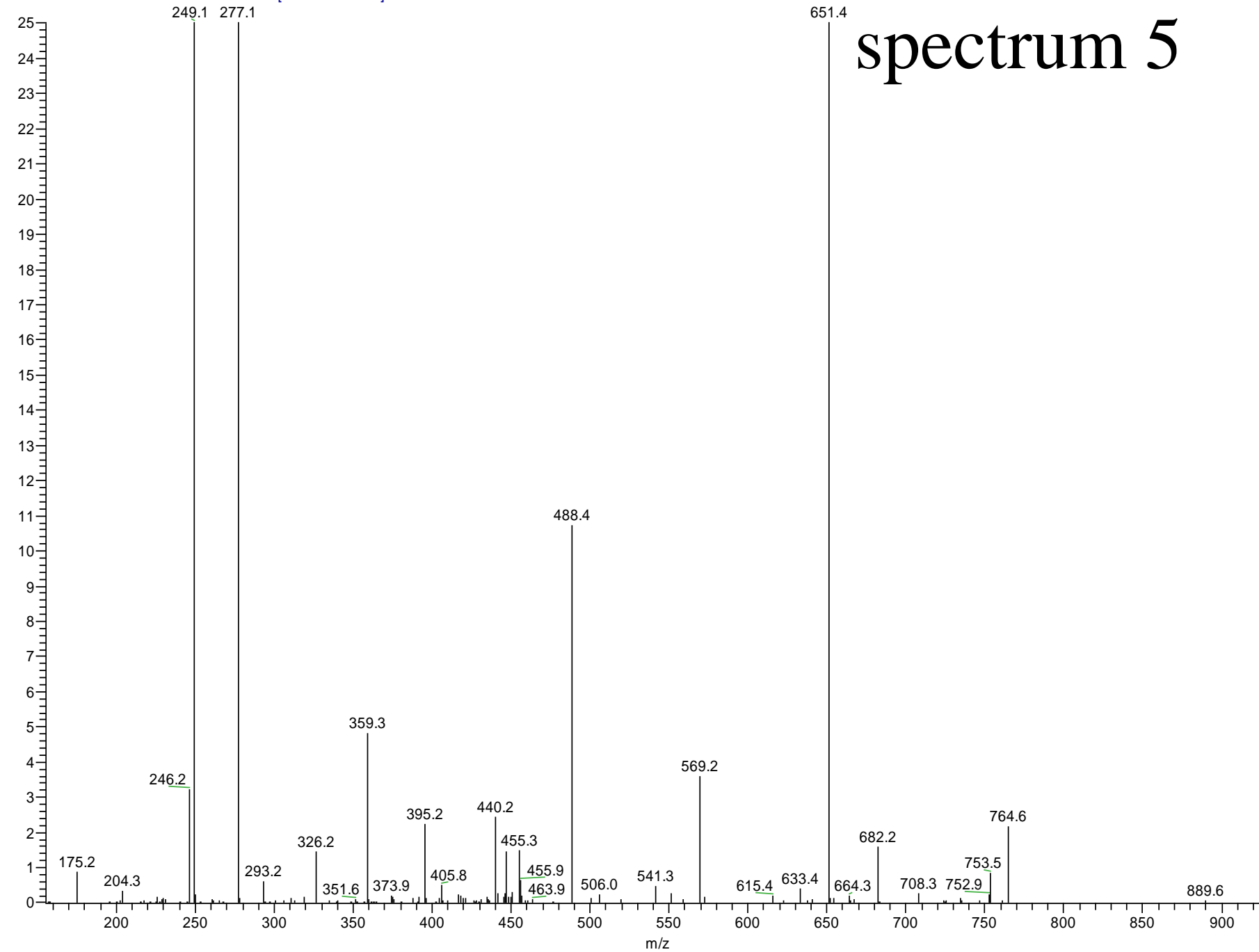
# pectrum 3



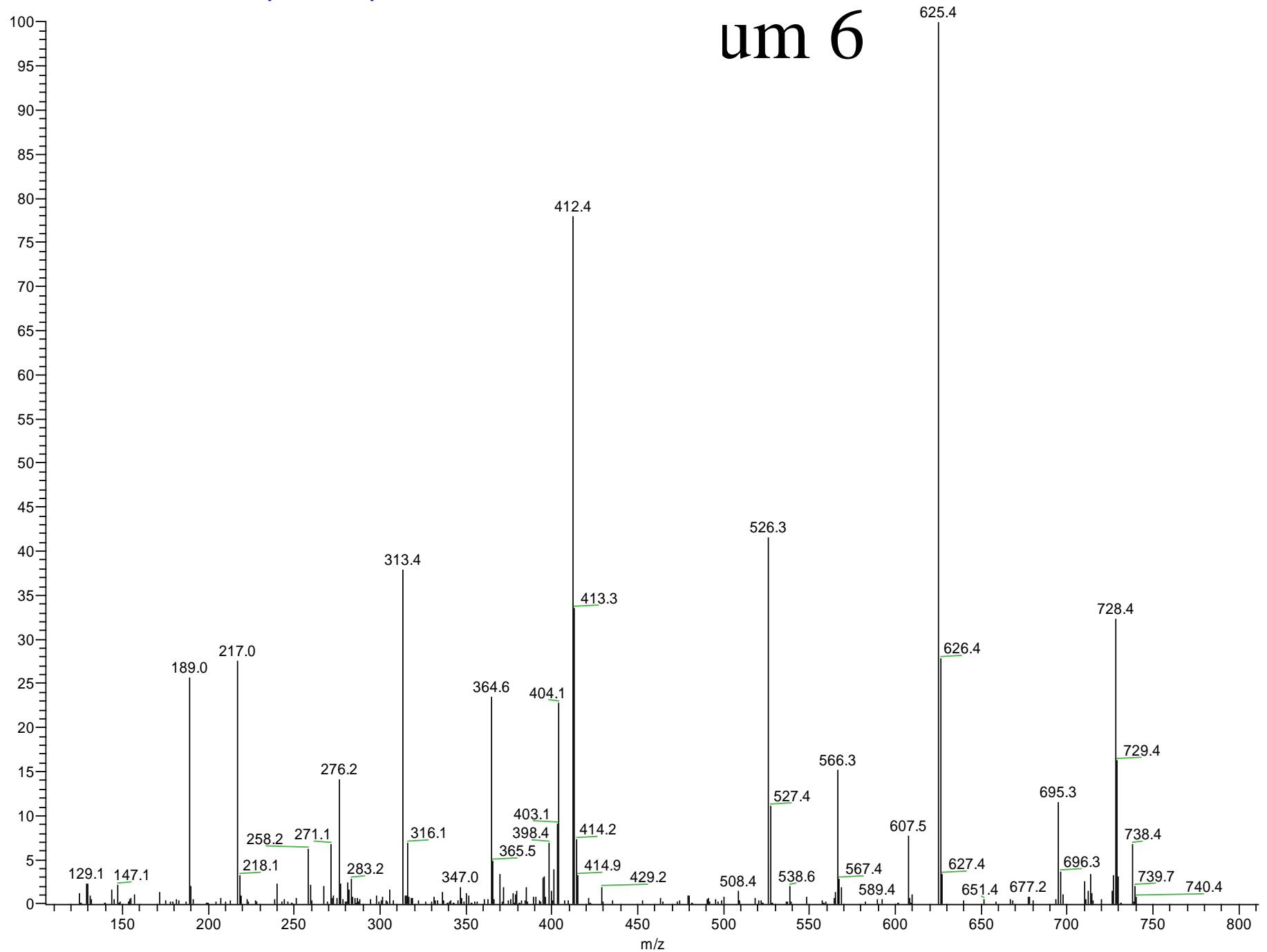
# spectrum 4

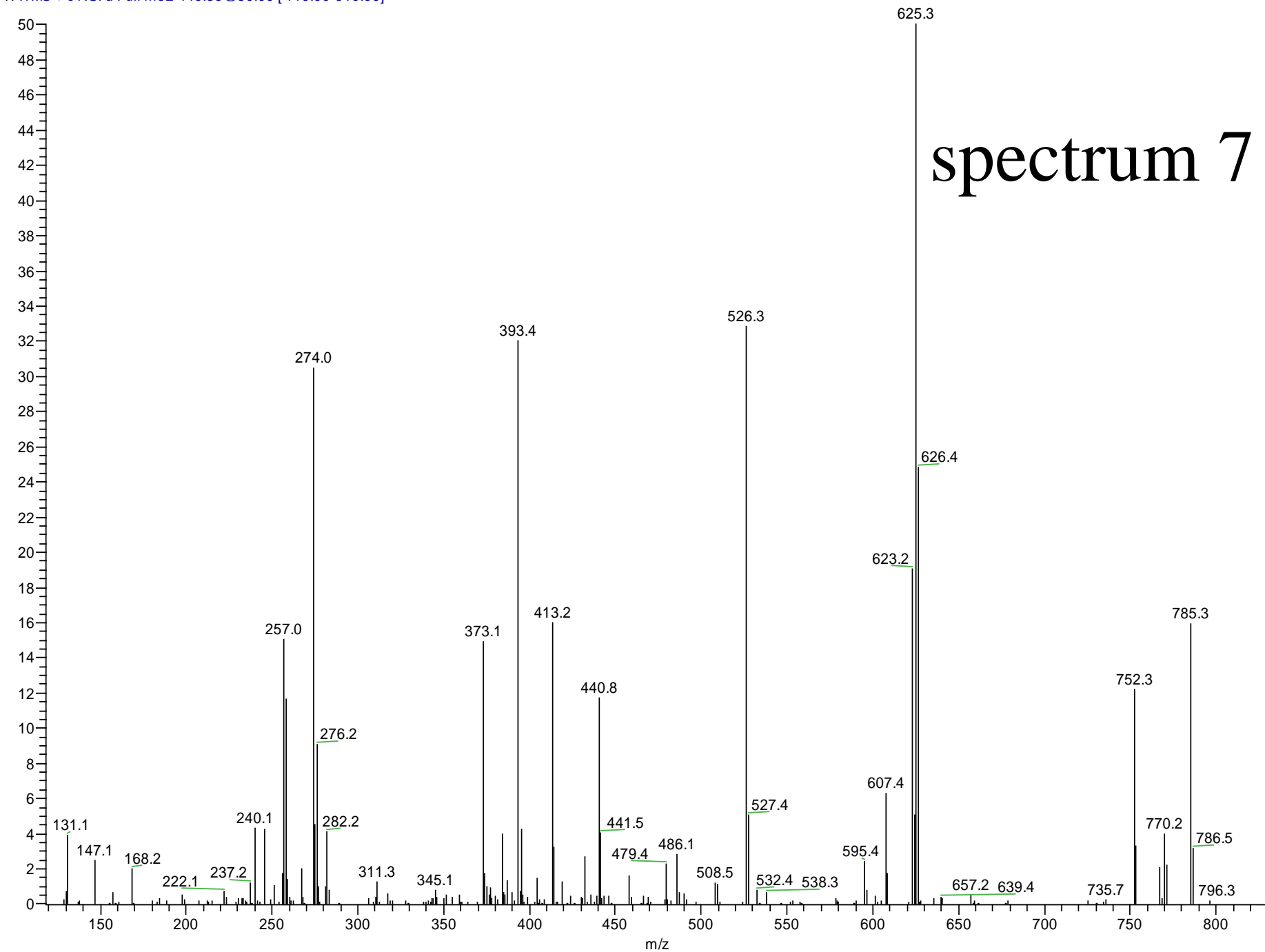


# spectrum 5



um 6





# spectrum 8

