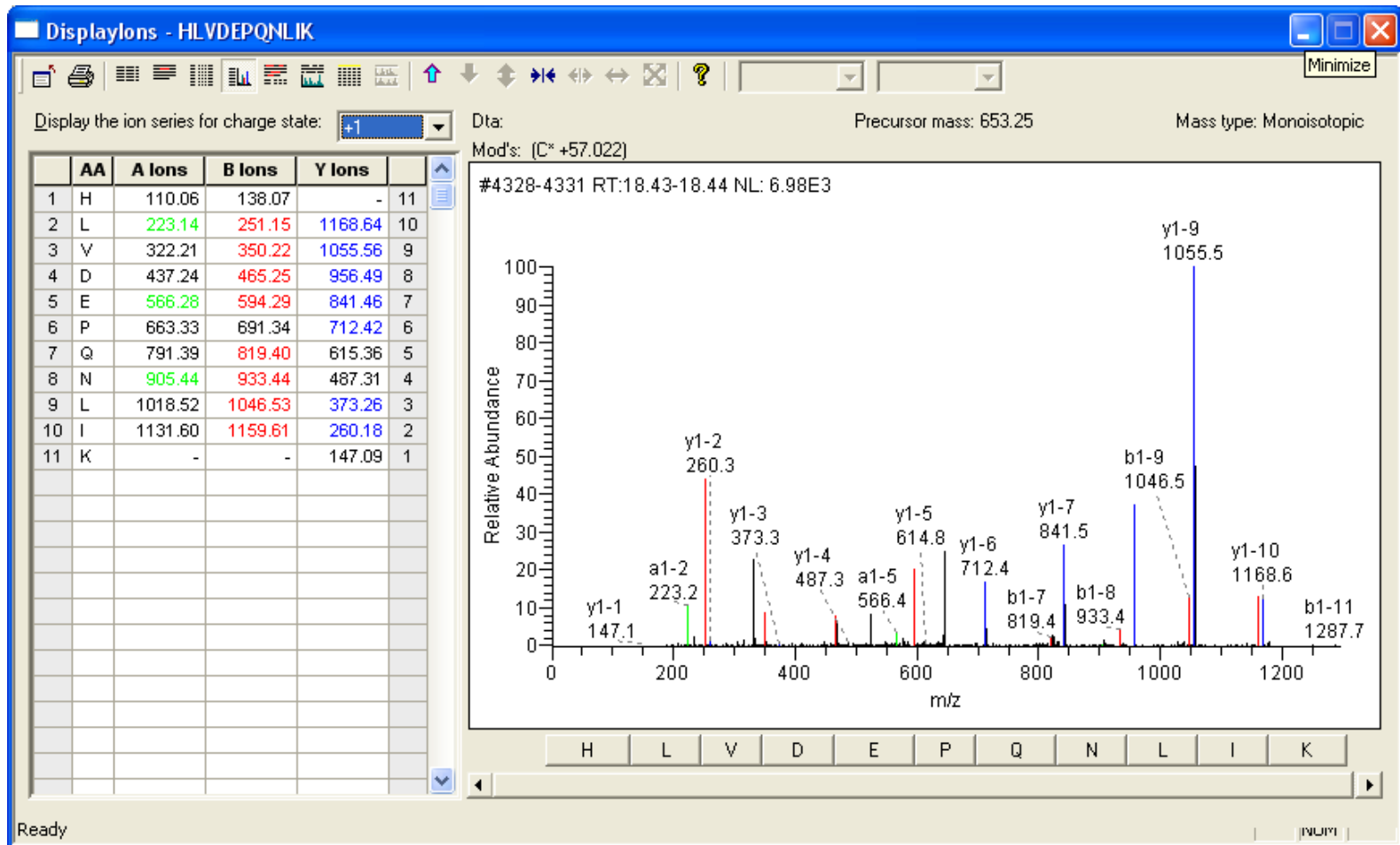


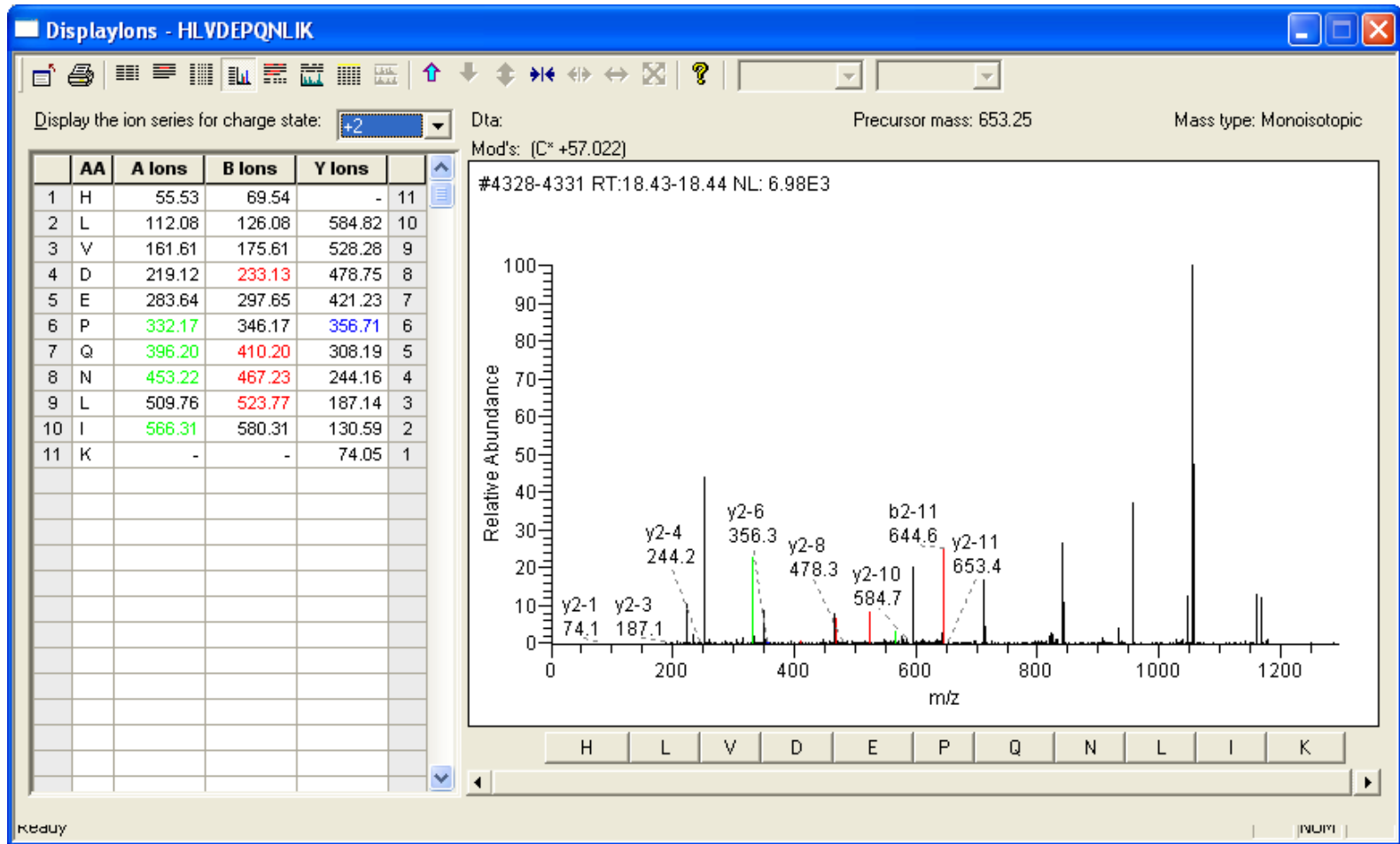
Spectra for de novo sequencing

HLVDEPQNLIK

scan 1



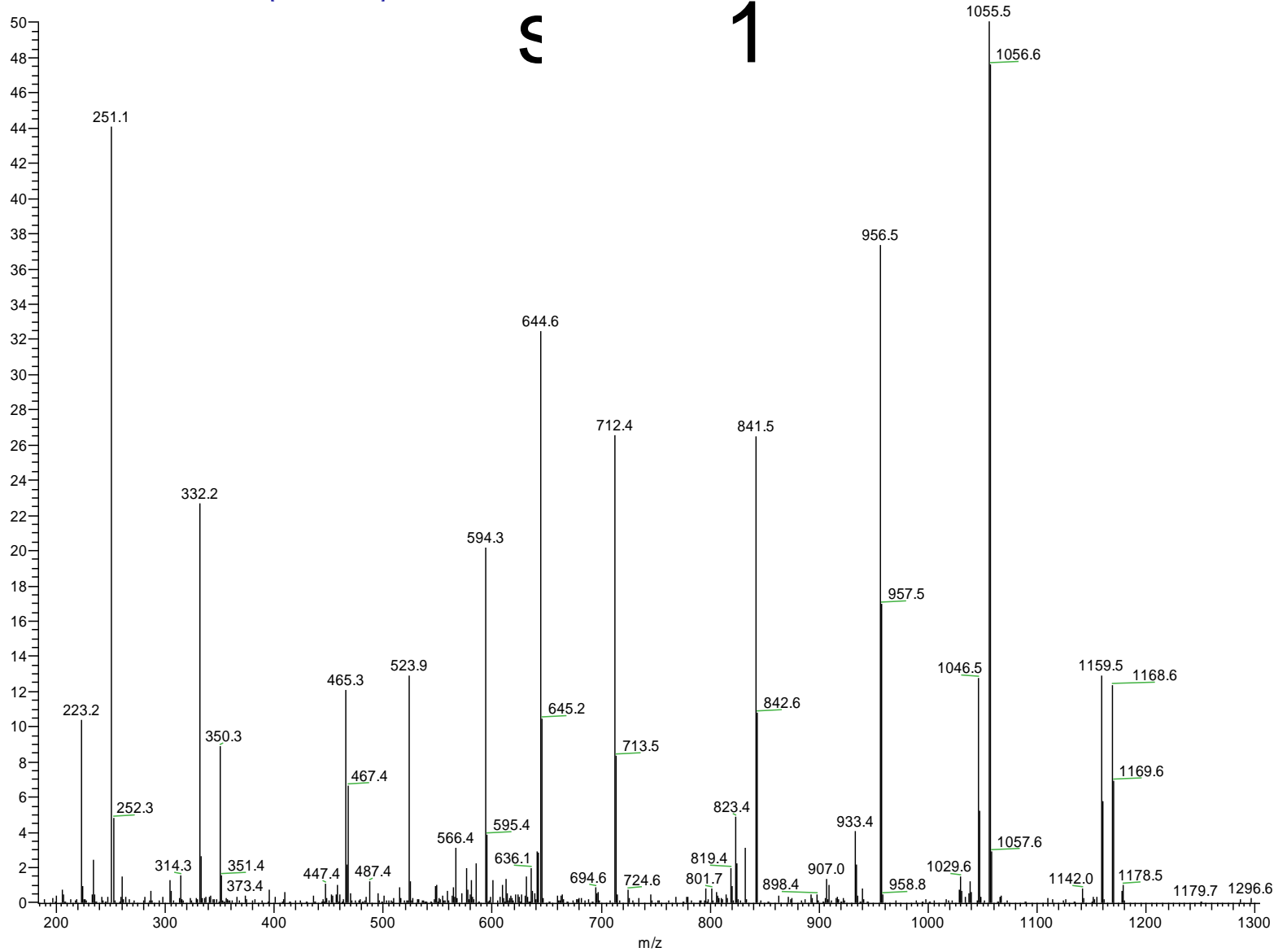
HLVDEPQNLIK scan 1



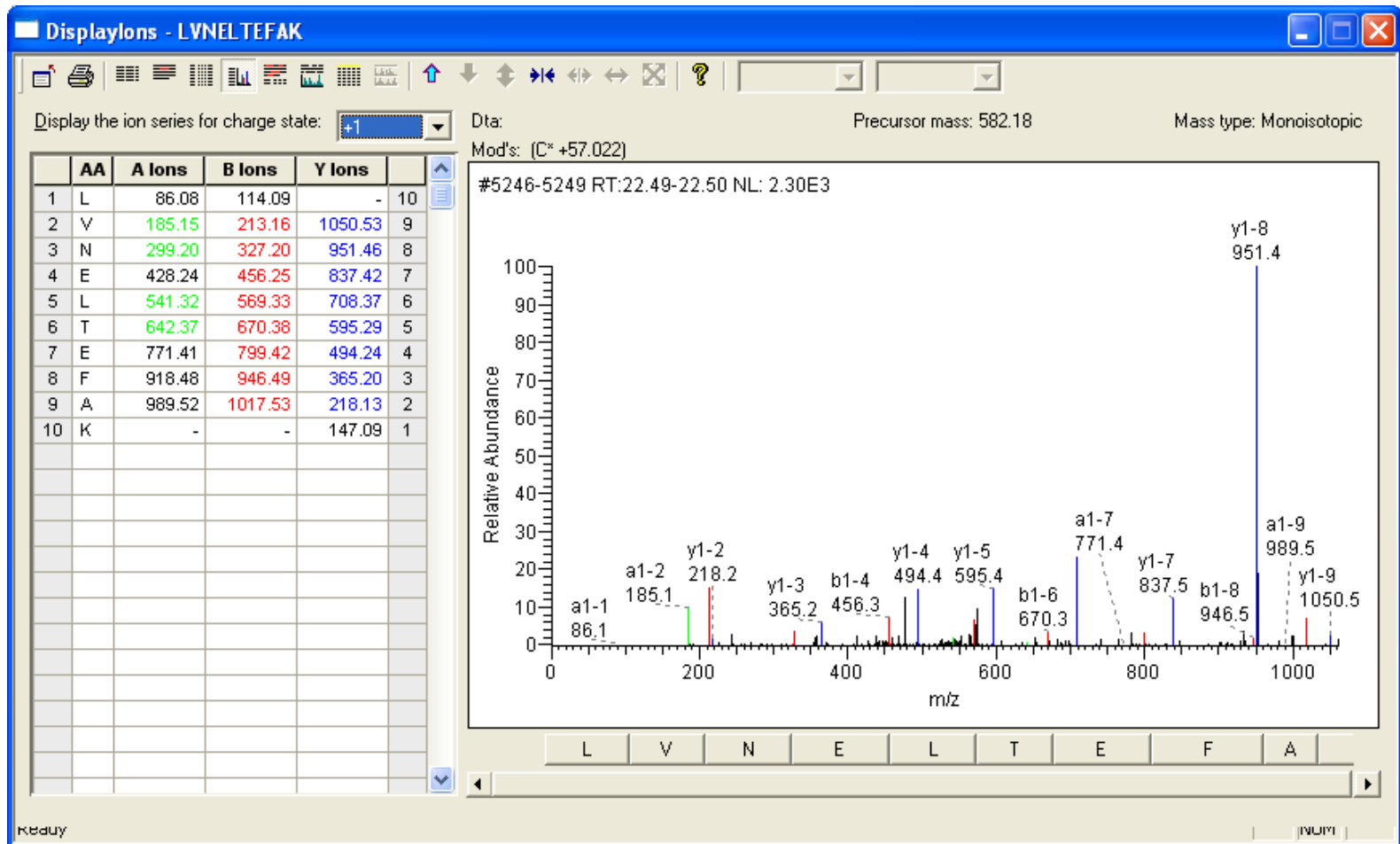
HLVDEPQNLIK

BSA_031203_NEWDIGEST02 #4327-4332 RT: 18.43-18.44 AV: 2 NL: 3.49E3
T: ITMS + c NSI d Full ms2 653.73@30.00 [165.00-1320.00]

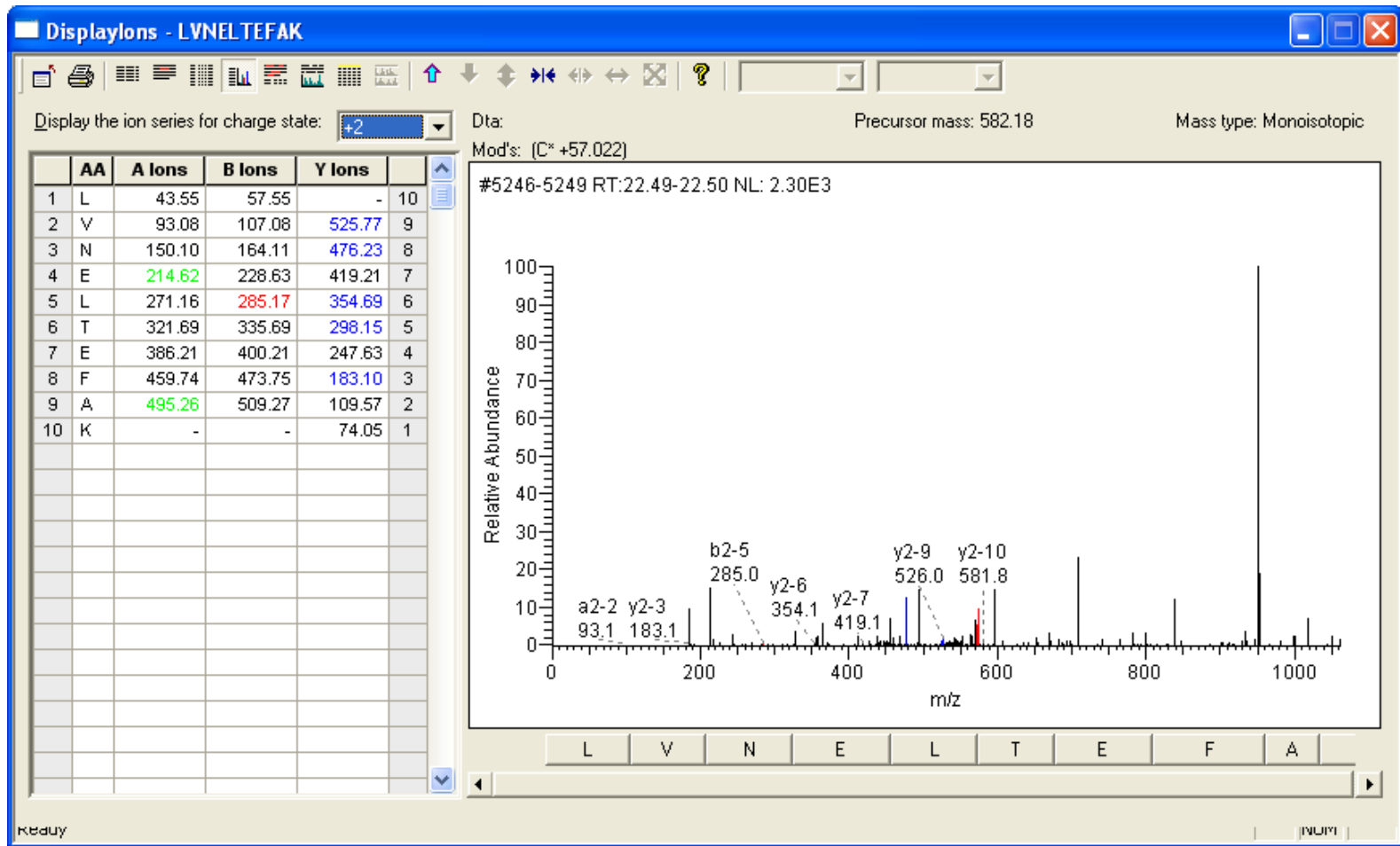
ε 1



LVNELTEFAK spectrum 2



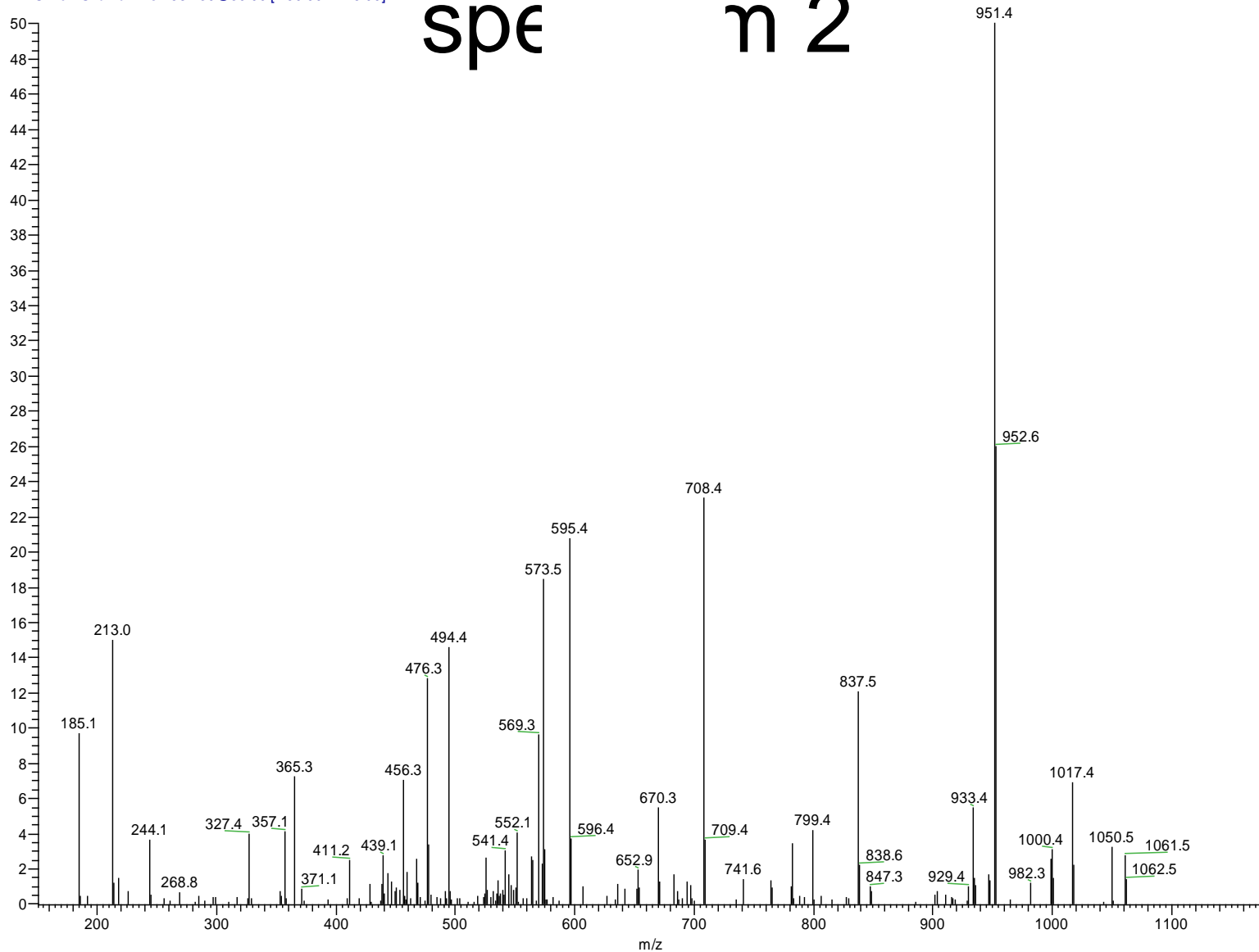
LVNELTEFAK spectrum 2



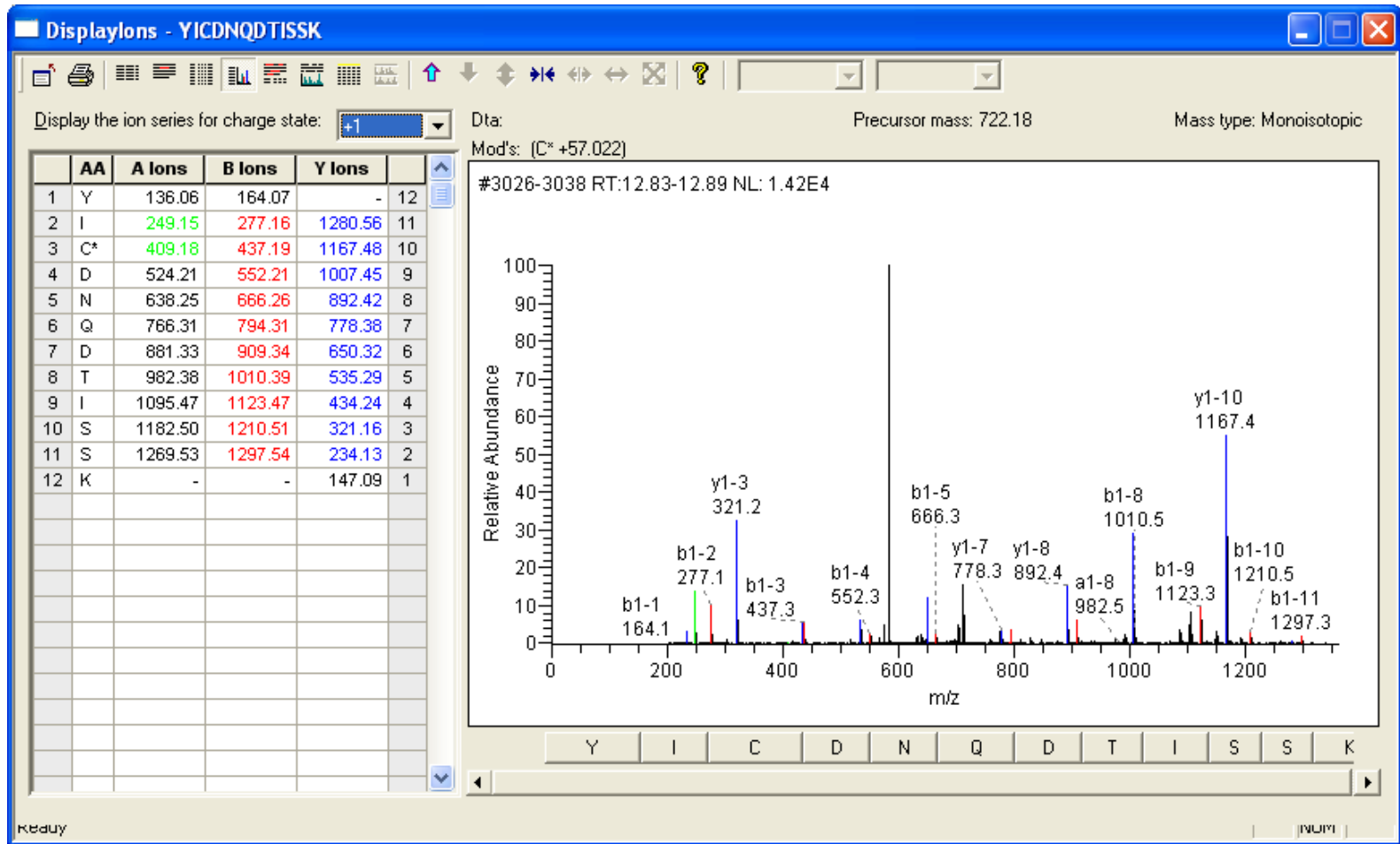
LVNELTEFAK

BSA_031203_NEWDIGEST02 #5246-5250 RT: 22.49-22.50 AV: 2 NL: 1.15E3
T: ITMS + c NSI d Full ms2 582.39@30.00 [150.00-1175.00]

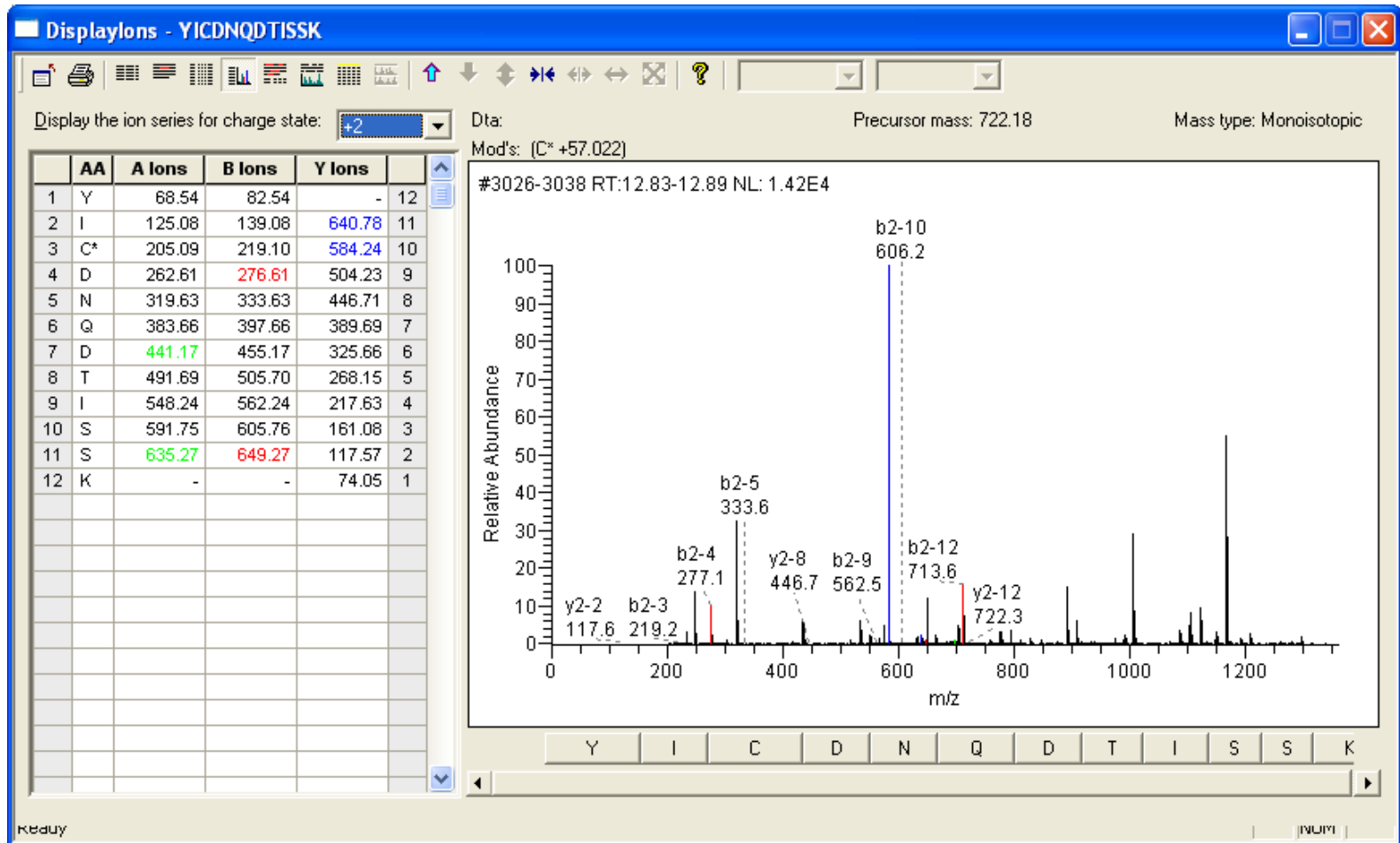
spe n 2



YIC*DNQDTISSK spectrum 3

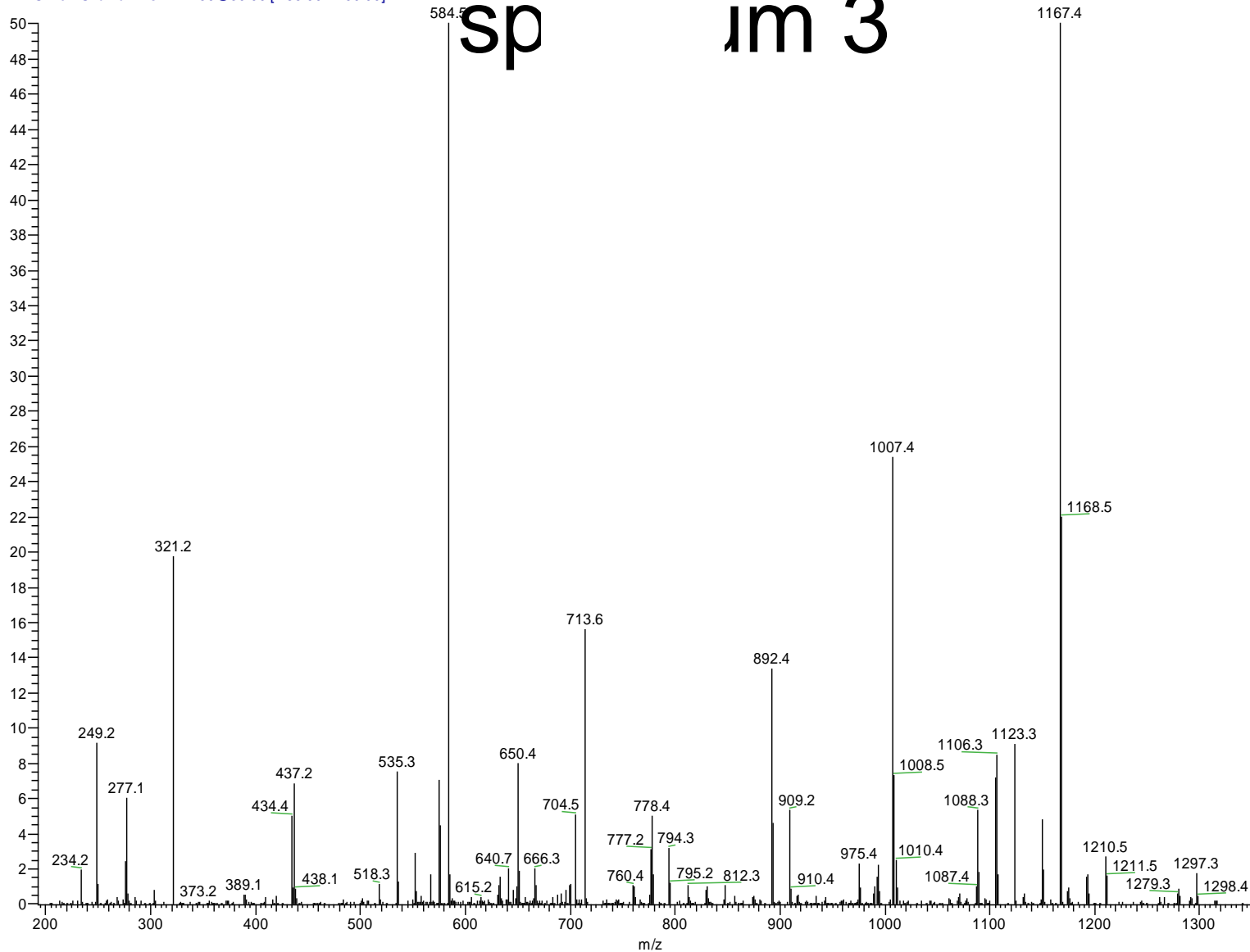


YIC*DNQDTISSK spectrum 3



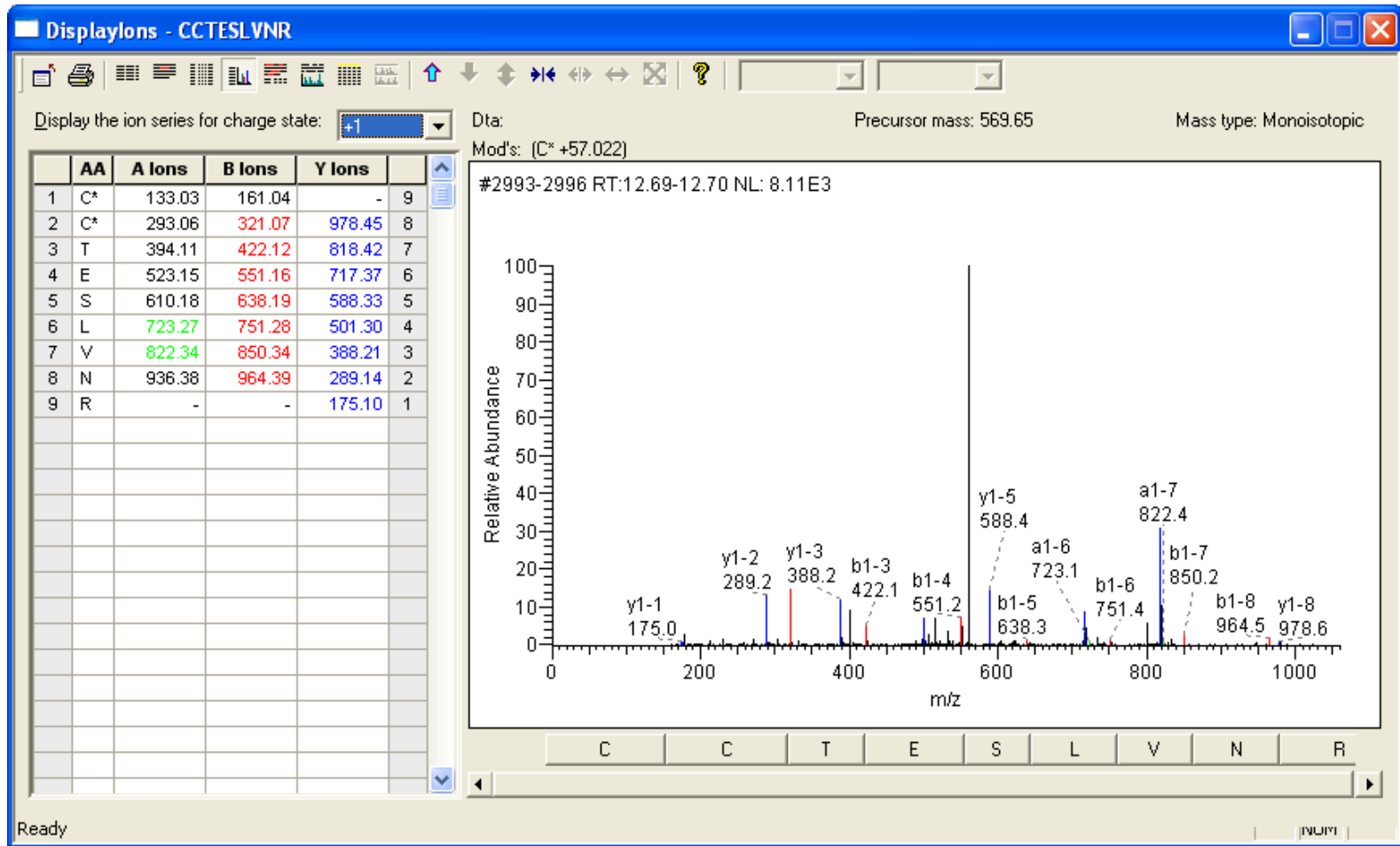
YIC*DNQDTISSK

BSA_031203_NEWDIGEST02 #3025-3030 RT: 12.83-12.85 AV: 2 NL: 7.11E3
T: ITMS + c NSI d Full ms2 722.59@30.00 [185.00-1460.00]

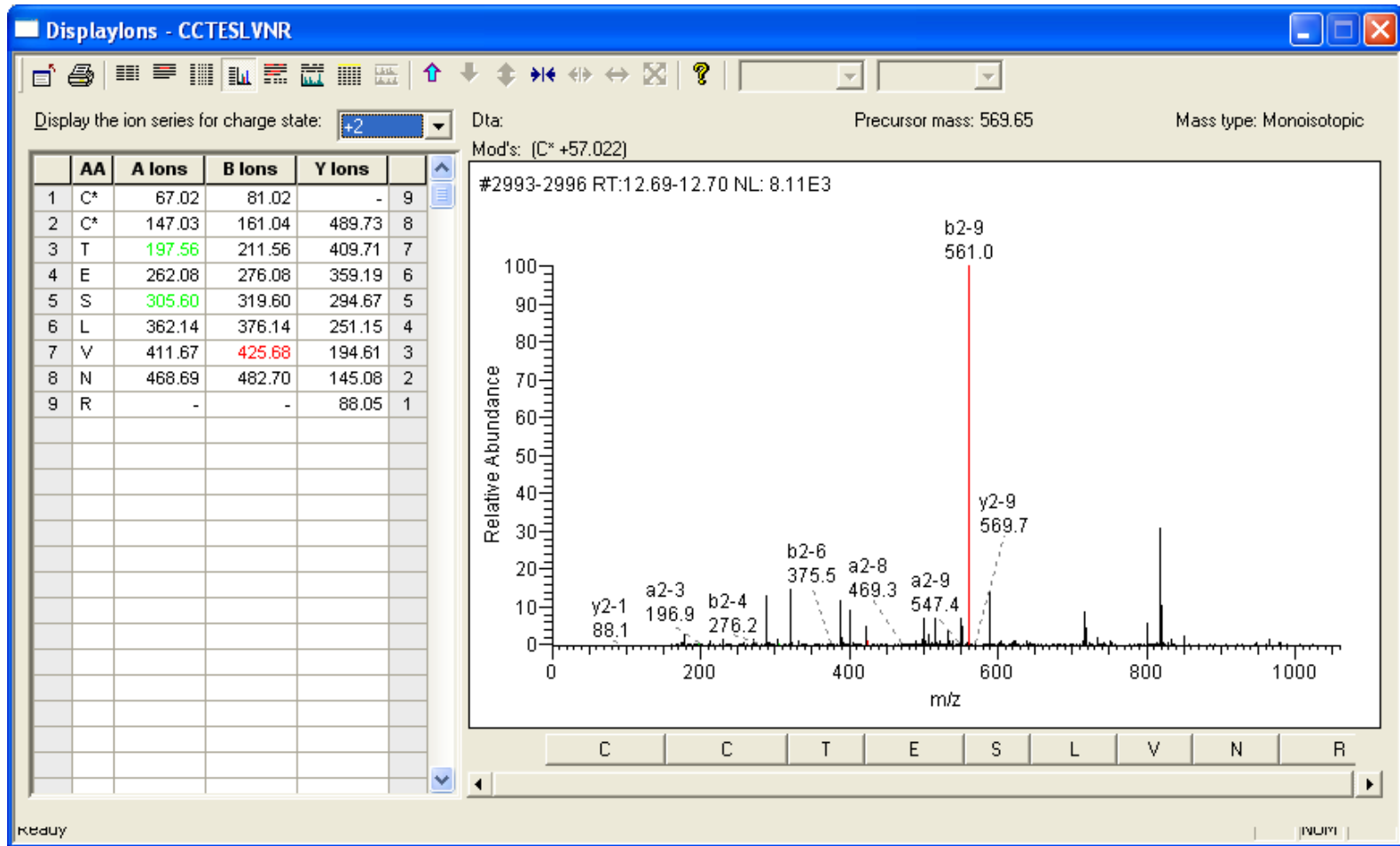


sp im 3

C*CTESLVNR spectrum 4

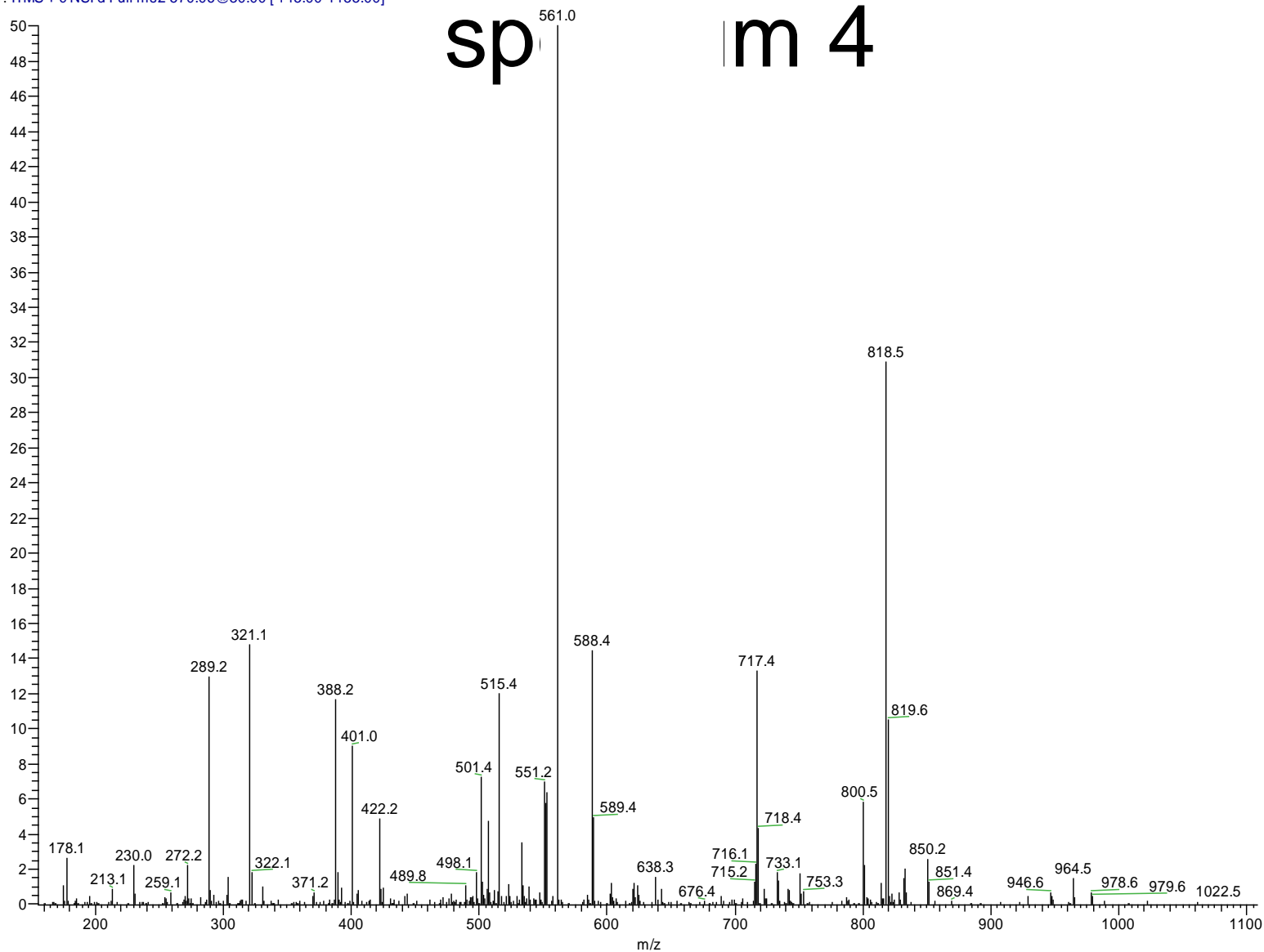


C*C*TESLVNR spectrum 4



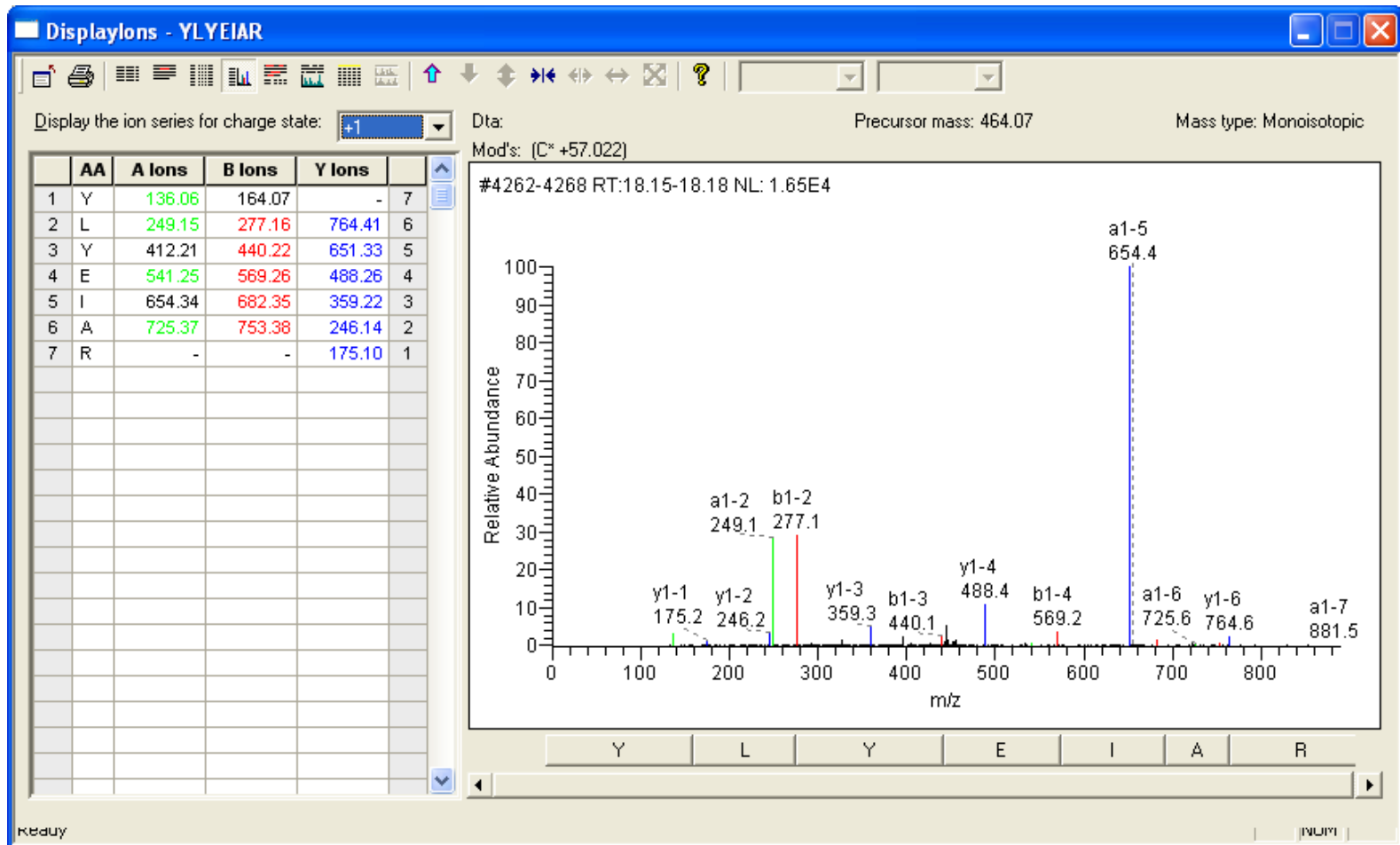
C*C*TESLVNR

BSA_031203_NEWDIGEST02 #2992-2997 RT: 12.69-12.70 AV: 2 NL: 4.06E3
T: ITMS + c NSI d Full ms2 570.06@30.00 [145.00-1155.00]

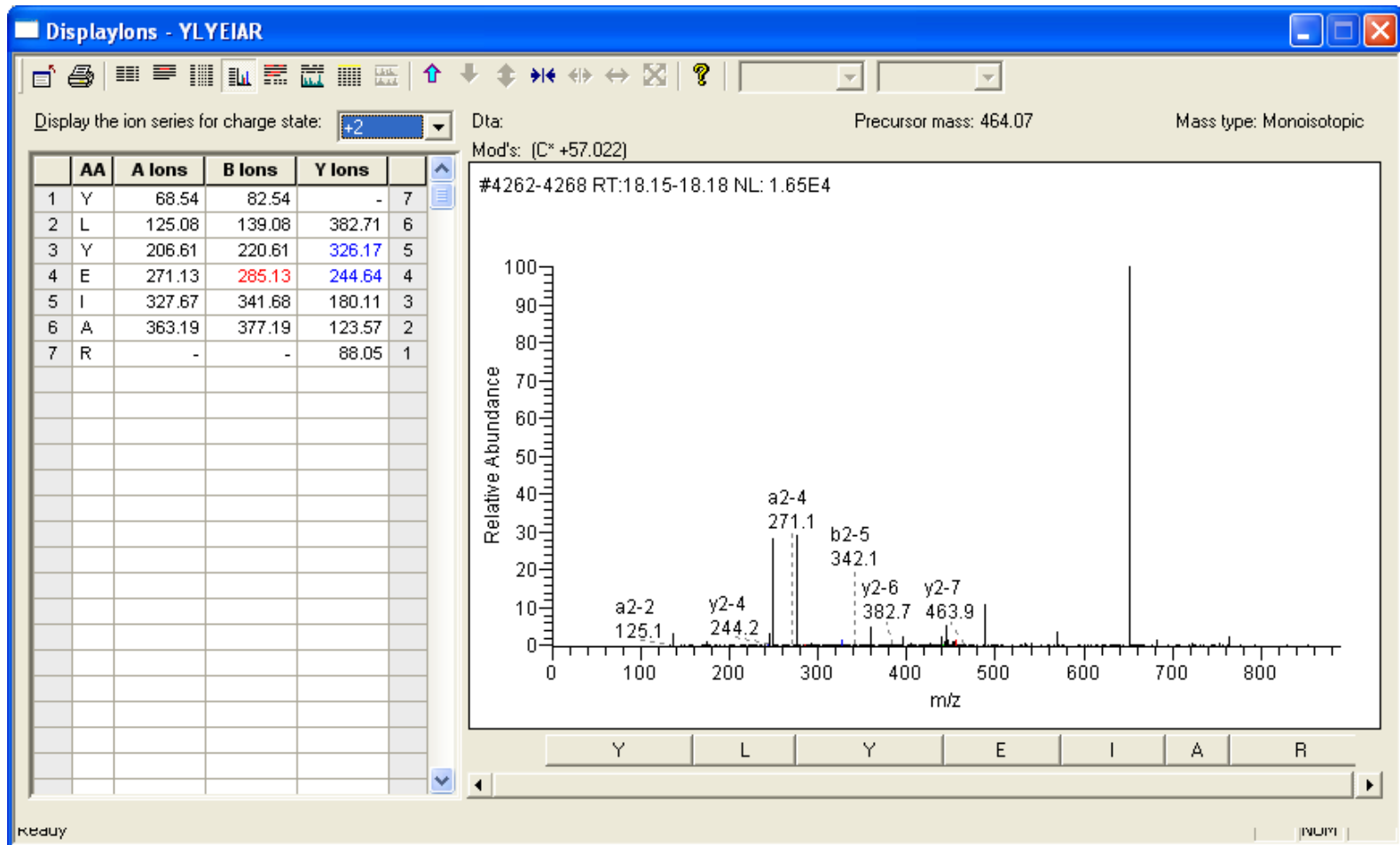


sp | m 4

YLYEIAR spectrum 5



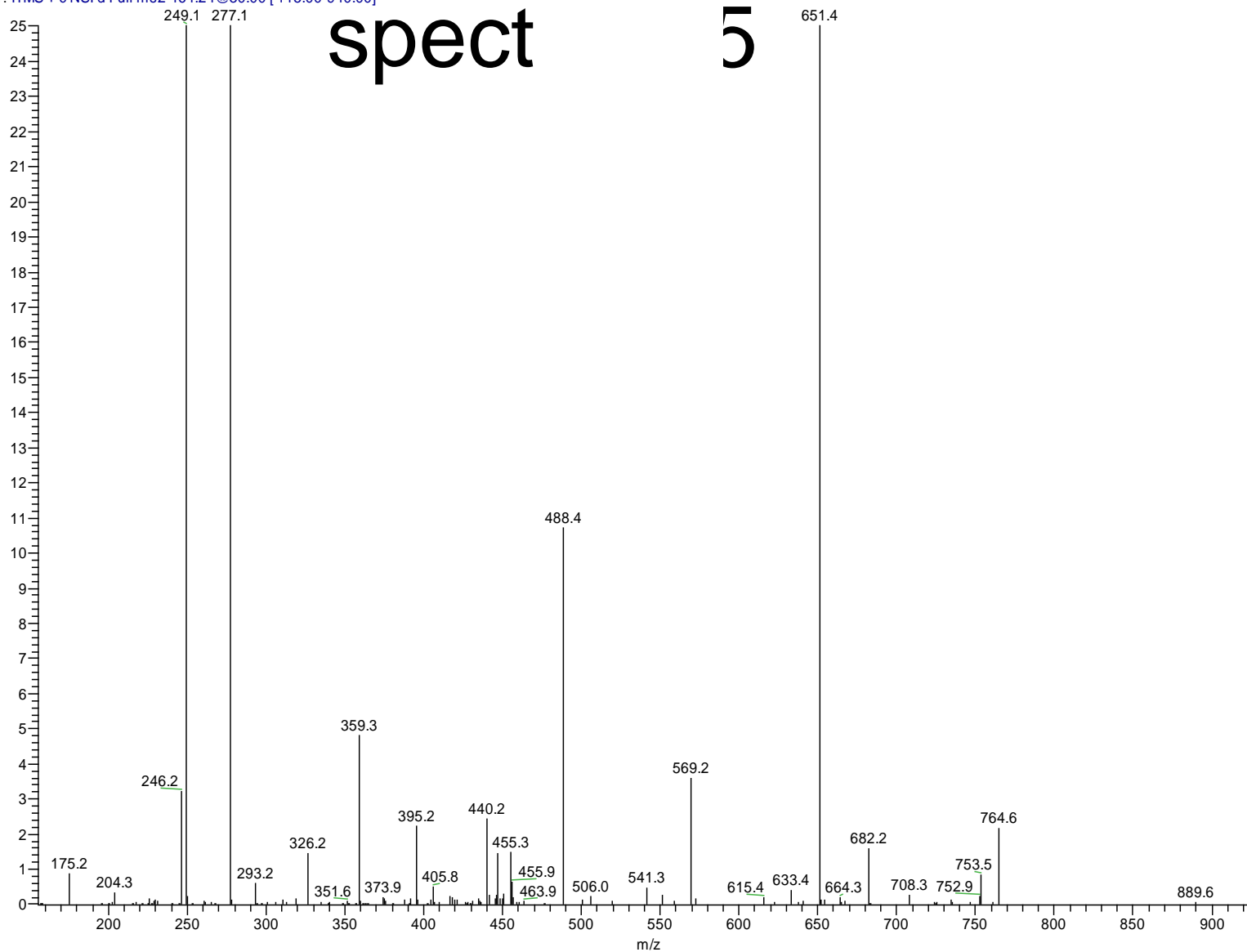
YLYEIAR spectrum 5



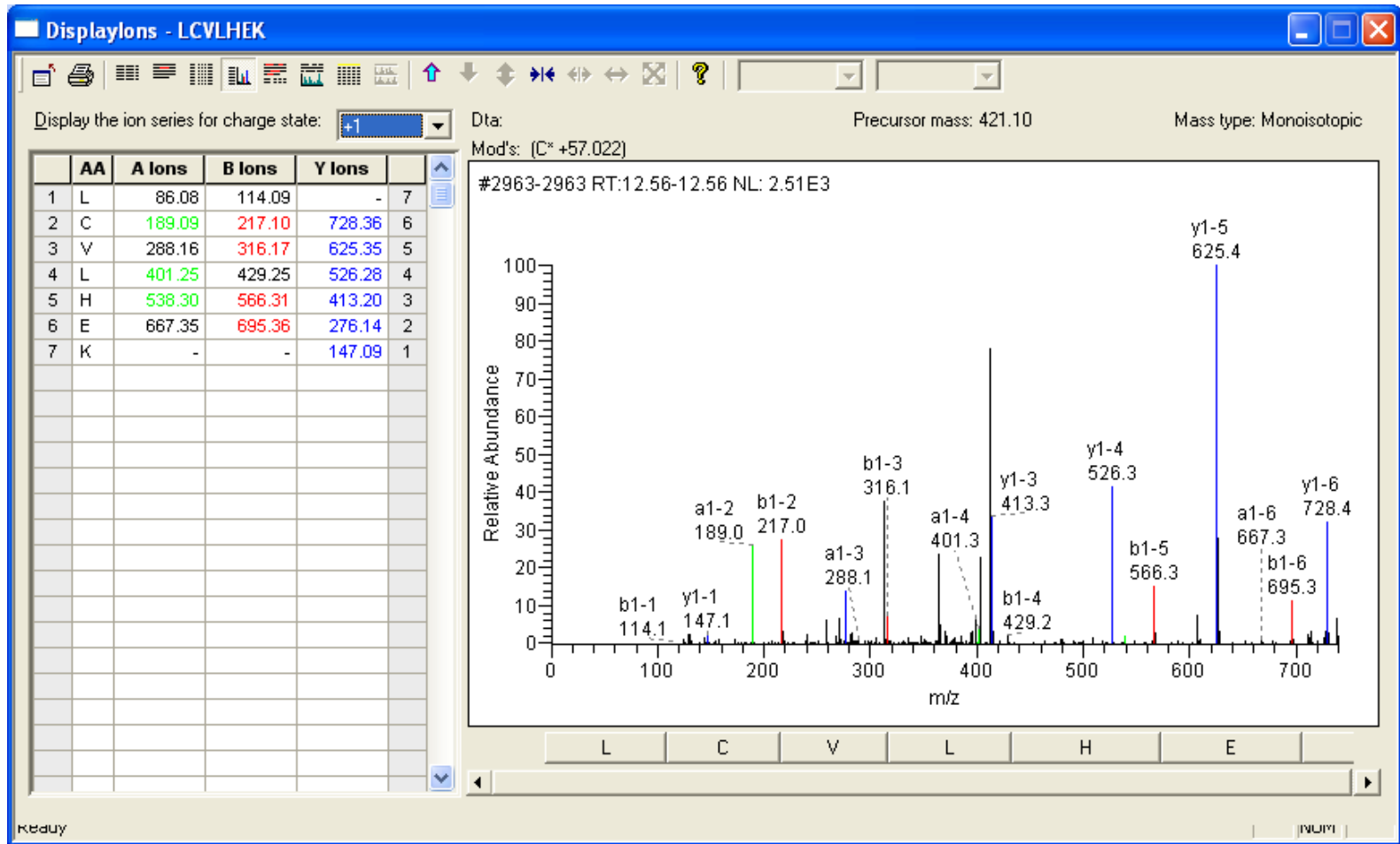
YLYEIAR

BSA_031203_NEWDIGEST02 #4268 RT: 18.18 AV: 1 NL: 1.65E4
T: ITMS + c NSI d Full ms2 464.24@30.00 [115.00-940.00]

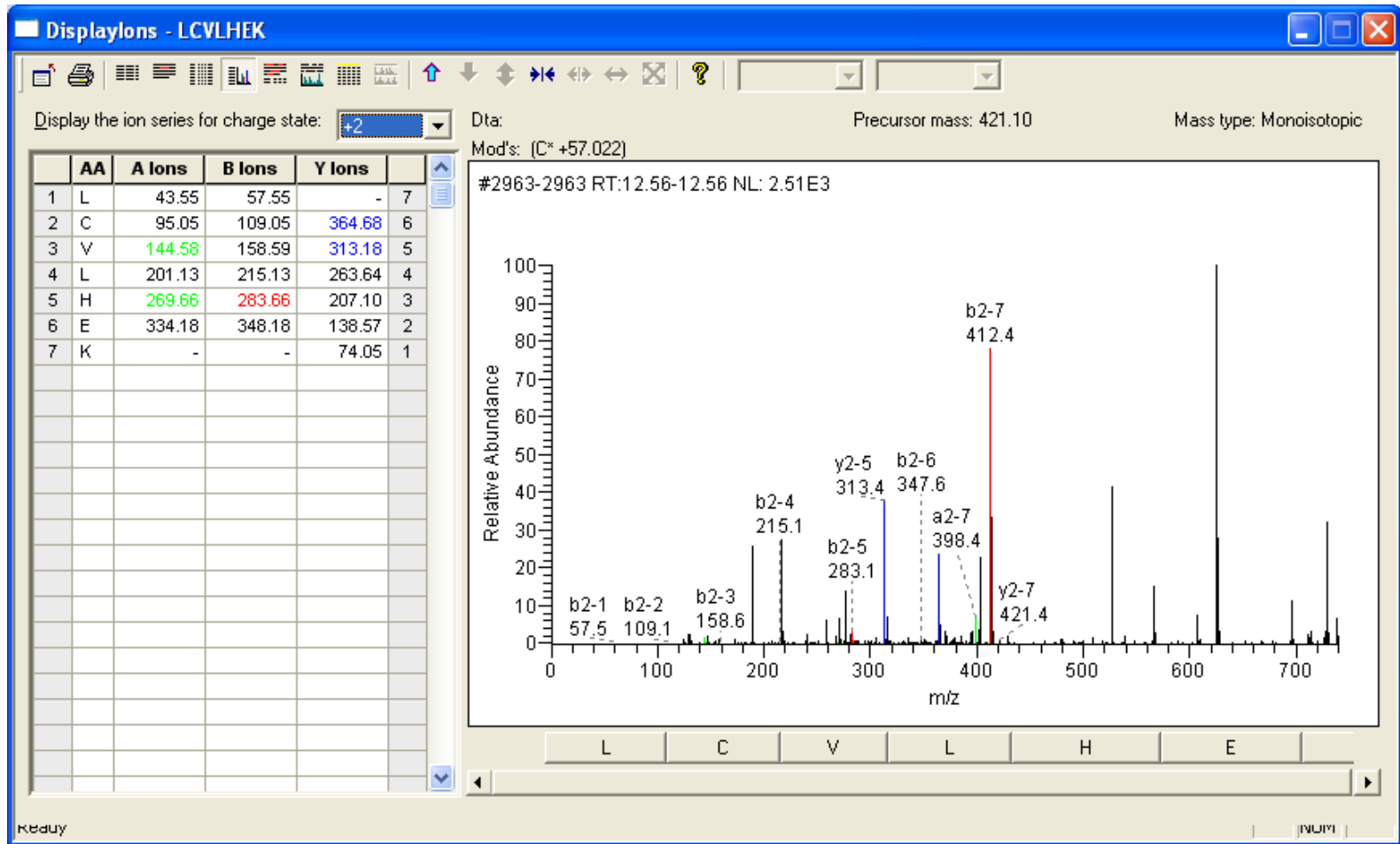
spect 5



LCVLHEK spectrum 6



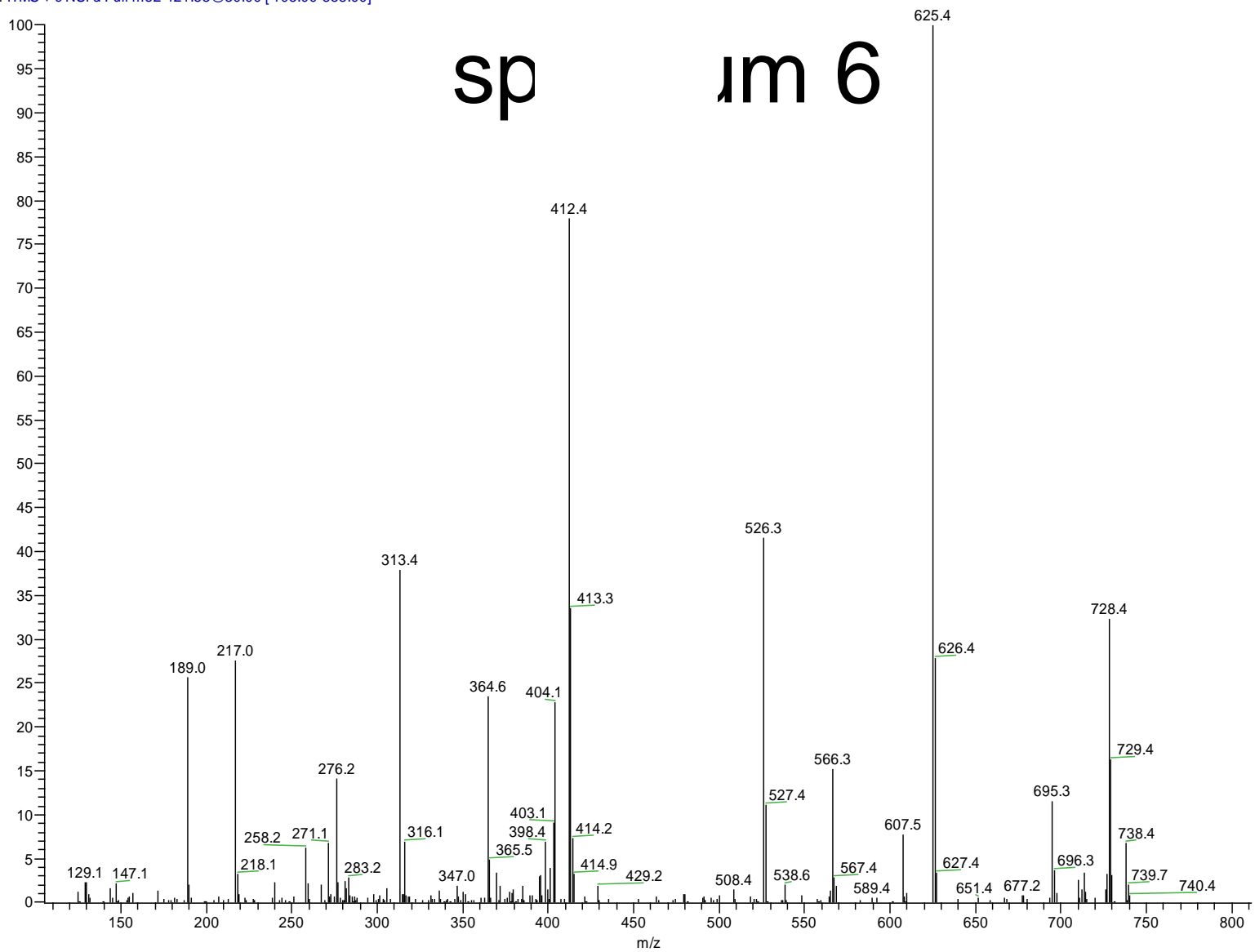
LCVLHEK spectrum 6



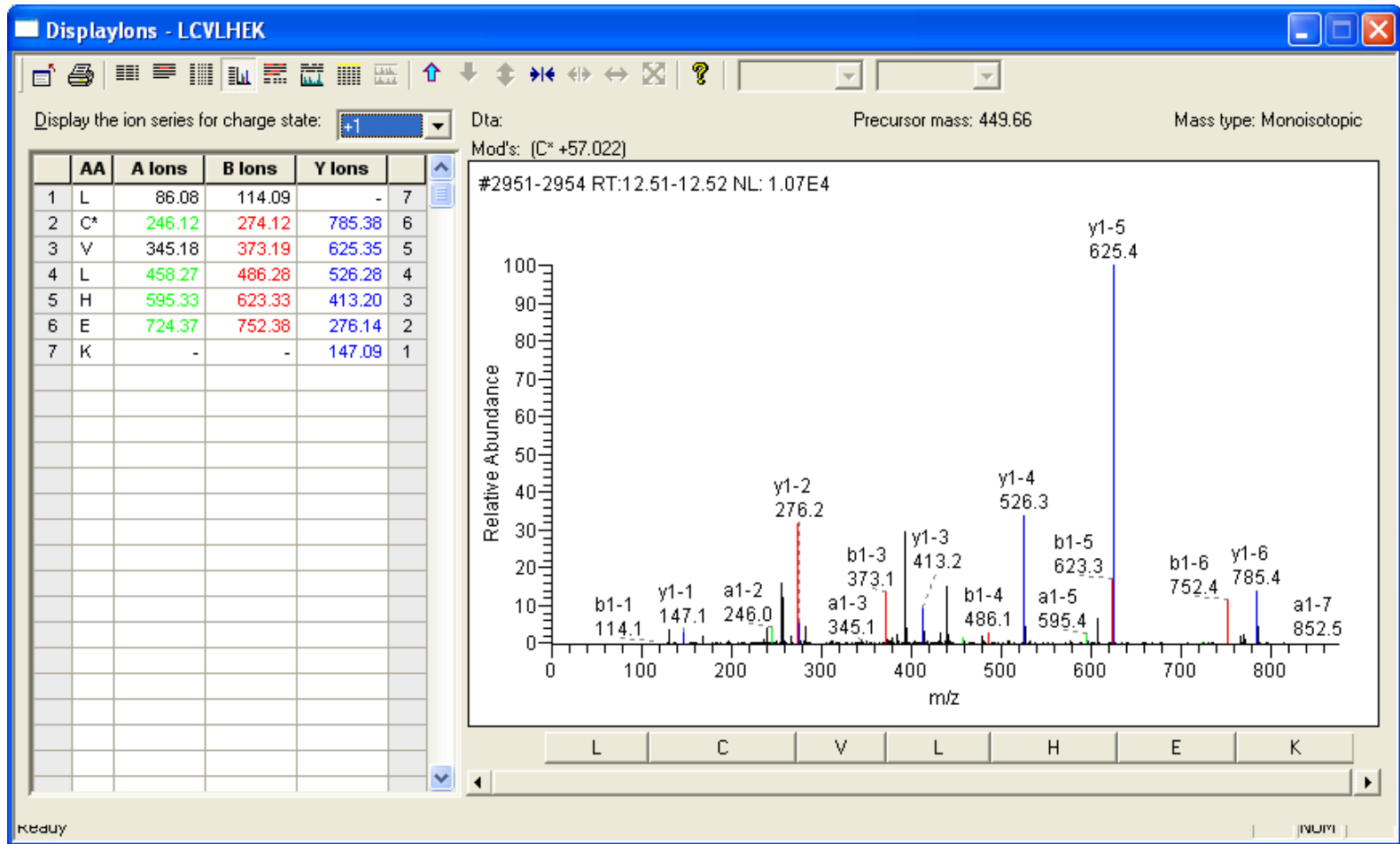
BSA_031203_NEWDIGEST02 #2963 RT: 12.56 AV: 1 NL: 2.51E3
T: ITMS + c NSI d Full ms2 421.53@30.00 [105.00-855.00]

LCVI HEK

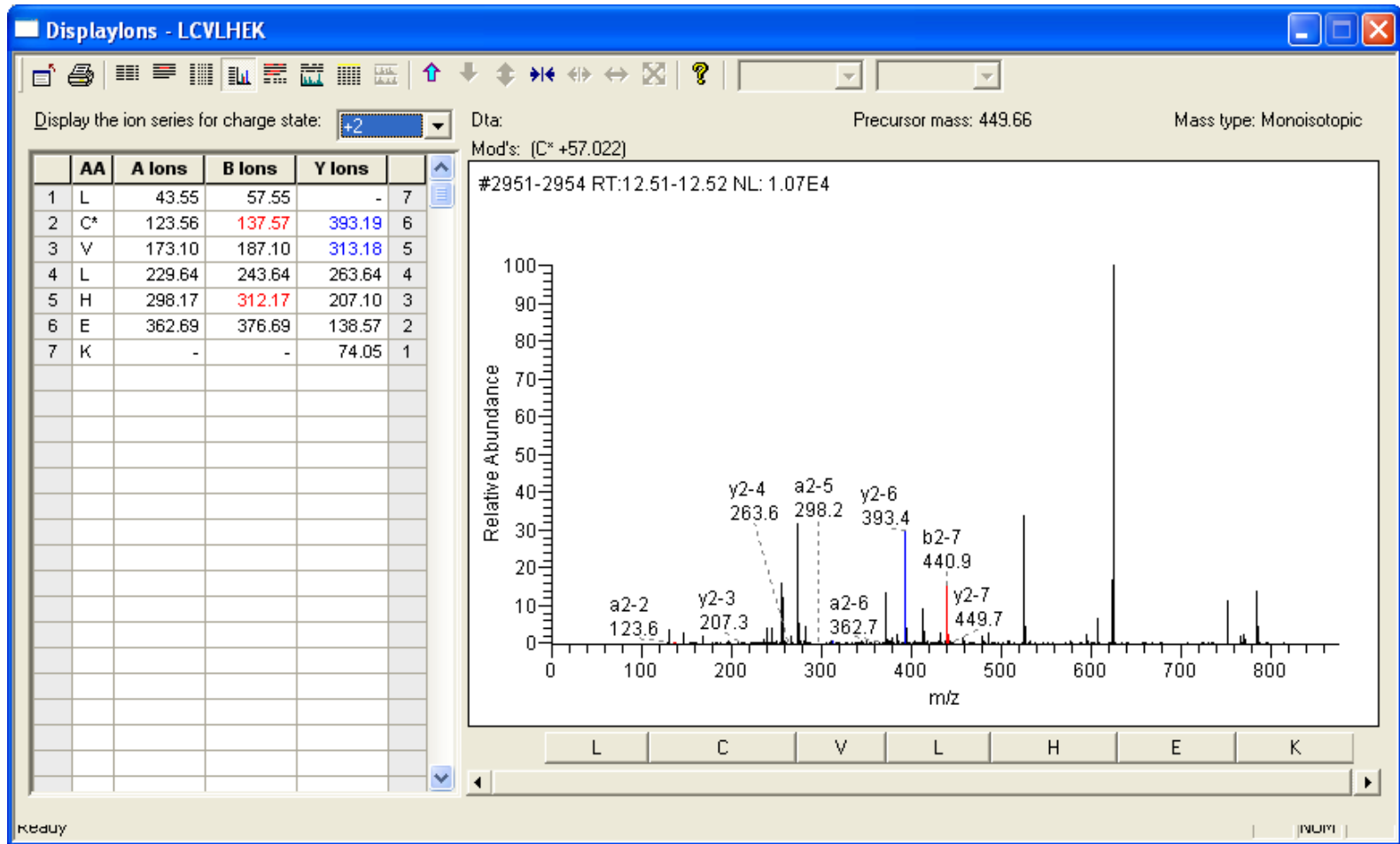
sp im 6



LC*VLHEK spectrum 7



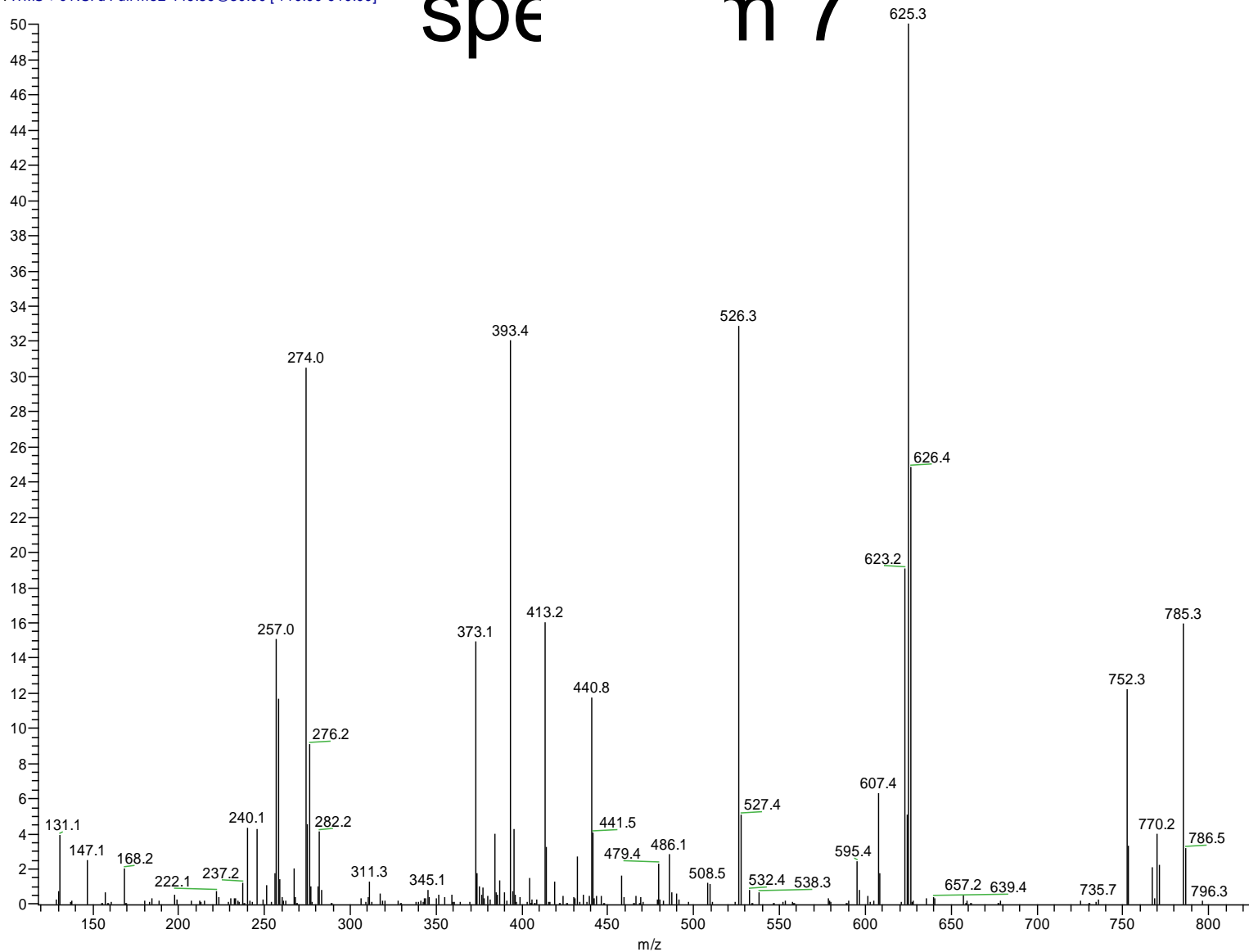
LC*VLHEK spectrum 7



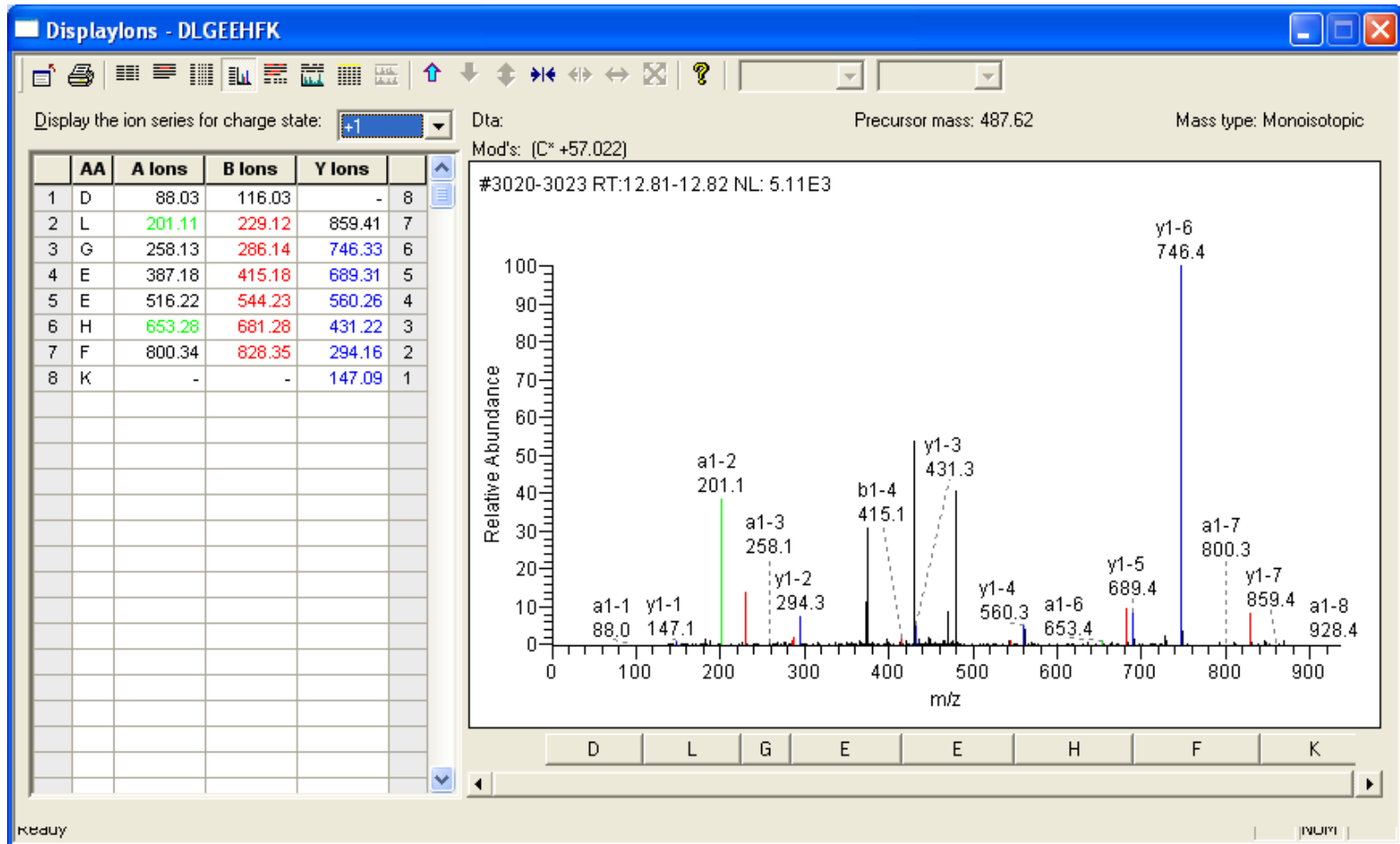
LC*VLHEK

BSA_031203_NEWDIGEST02 #2954 RT: 12.52 AV: 1 NL: 6.09E3
T: ITMS + c NSI d Full ms2 449.89@30.00 [110.00-910.00]

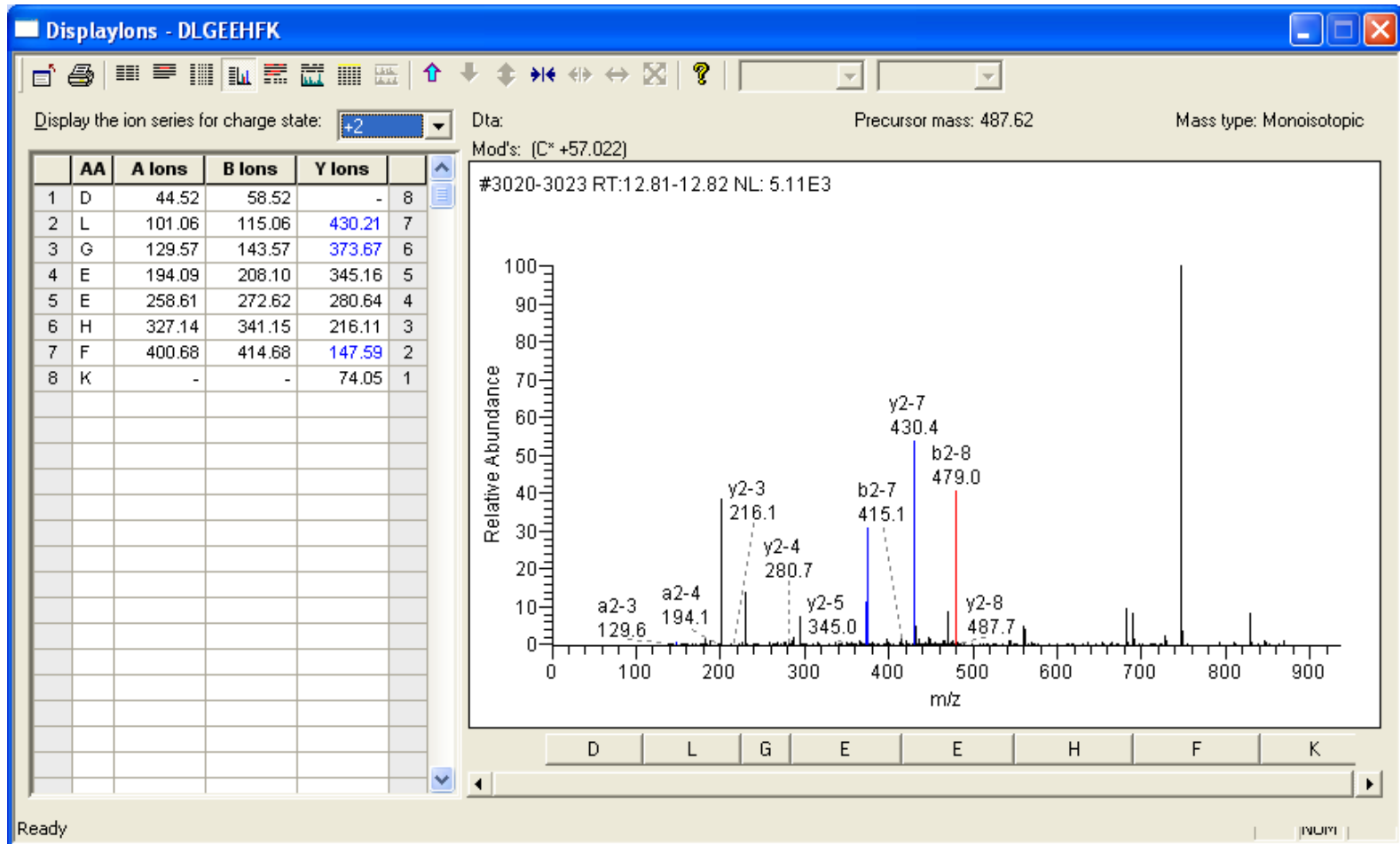
spe n 7



DLGEEHFK spectrum 8



DLGEEHFK spectrum 8



DLGEEHFK

BSA_031203_NEWDIGEST02 #3019-3024 RT: 12.81-12.82 AV: 2 NL: 2.56E3
T: ITMS + c NSI d Full ms2 488.10@30.00 [120.00-990.00]

sp | m 8

